

Review

Open Access



Emerging actionable targets to treat therapy-resistant colorectal cancers

Emanuela Grassilli, Maria Grazia Cerrito

Department of Medicine and Surgery, University of Milano-Bicocca, Monza 20900, Italy.

Correspondence to: Dr. Emanuela Grassilli, Department of Medicine and Surgery, University of Milano-Bicocca, via Cadore 48, Monza 20900, Italy. E-mail: emanuela.grassilli@unimib.it

How to cite this article: Grassilli E, Cerrito MG. Emerging actionable targets to treat therapy-resistant colorectal cancers. *Cancer Drug Resist* 2022;5:36-63. <https://dx.doi.org/10.20517/cdr.2021.96>

Received: 15 Sep 2021 **First Decision:** 19 Nov 2021 **Revision:** 6 Dec 2021 **Accepted:** 15 Dec 2021 **Published:** 4 Jan 2022

Academic Editor: Godefridus J. (Frits) Peters **Copy Editor:** Yue-Yue Zhang **Production Editor:** Yue-Yue Zhang

Abstract

In the last two decades major improvements have been reached in the early diagnosis of colorectal cancer (CRC) and, besides chemotherapy, an ampler choice of therapeutic approaches is now available, including targeted and immunotherapy. Despite that, CRC remains a “big killer” mainly due to the development of resistance to therapies, especially when the disease is diagnosed after it is already metastatic. At the same time, our knowledge of the mechanisms underlying resistance has been rapidly expanding which allows the development of novel therapeutic options in order to overcome it. As far as resistance to chemotherapy is concerned, several contributors have been identified such as: intake/efflux systems upregulation; alterations in the DNA damage response, due to defect in the DNA checkpoint and repair systems; dysregulation of the expression of apoptotic/anti-apoptotic members of the BCL2 family; overexpression of oncogenic kinases; the presence of cancer stem cells; and the composition of the tumoral microenvironment and that of the gut microbiota. Interestingly, several mechanisms are also involved in the resistance to targeted and/or immunotherapy. For example, overexpression and/or hyperactivation and/or amplification of oncogenic kinases can sustain resistance to targeted therapy whereas the composition of the gut microbiota, as well as that of the tumoral niche, and defects in DNA repair systems are crucial for determining the response to immunotherapy. In this review we will make an overview of the main resistance mechanisms identified so far and of the new therapeutic approaches to overcome it.

Keywords: Colorectal cancer, resistance, chemotherapy, target therapy, EGFR, ERBB2, MET, BRAF, kinase inhibitors, immune checkpoint inhibitors, gut microbiota



© The Author(s) 2022. **Open Access** This article is licensed under a Creative Commons Attribution 4.0 International License (<https://creativecommons.org/licenses/by/4.0/>), which permits unrestricted use, sharing, adaptation, distribution and reproduction in any medium or format, for any purpose, even commercially, as long as you give appropriate credit to the original author(s) and the source, provide a link to the Creative Commons license, and indicate if changes were made.



INTRODUCTION

Notwithstanding widespread, effective measures of preventive screening, early detection and major advances in treatment options, colorectal cancer (CRC) is still the fourth cause of cancer-related death worldwide^[1,2]. In fact, due to the relatively asymptomatic progression of the disease in the early stages, patients are frequently diagnosed with metastatic CRC (mCRC), with a 5-year survival rate of around 14%^[3]. Neo-adjuvant or adjuvant chemotherapy, together with surgery, represent the backbone of the therapeutic approach for both early-stage and metastatic cancer patients. Depending on tumor site and progression of the disease, chemotherapy can be associated with radiotherapy^[4-6] and, in selected cases, it can be possibly integrated with targeted therapy and/or immunotherapy. However, despite a variety of therapeutic approaches, resistance - both intrinsic and acquired - to drug treatment(s) remains one of the greatest challenges in the long-term management of incurable mCRC and eventually contributes to death^[7,8]. In the last two decades, remarkable progresses have been made in the understanding of the mechanisms underlying drug resistance and in the unraveling of the feedback mechanisms fueling acquired resistance to targeted and/or immunotherapy. In addition, several phenotypes and synthetic lethality screens uncovered important liabilities that can be pharmacologically targeted in resistant tumors and in specific mutational settings^[9]. Accordingly, hundreds of clinical trials are currently undergoing to test new drugs and new combinations for the treatment of mCRC. This review will pinpoint the most promising targets emerged in the last decade.

RESISTANCE TO CHEMOTHERAPY

According to the American Society of Clinical Oncology (ASCO) guidelines (<https://www.asco.org/>), the main drugs used for chemotherapy are 5-fluorouracil (5-FU), irinotecan, and oxaliplatin, either alone or in combinations such as in the FOLFOX (5-FU + leucovorin + oxaliplatin) or FOLFIRI (5-FU + leucovorin + irinotecan) regimens. 5-FU-based chemotherapy is the main approach for advanced CRC and, when used in combination, initial responses are up to 55%-65%. When administered sequentially, median overall survival (OS) can range from 18 to 20 months^[10]. Although 5-FU initially de-bulks the tumor mass, recurrence usually occurs, thus pinpointing how acquired drug resistance, and consequent tumor re-growth, represents the main obstacle to effective clinical outcomes for CRC patients. Several different mechanisms have been identified accounting for resistance to 5-FU-based chemotherapy^[11] and increasing number of strategies are being explored to increase the responsiveness of resistant tumors to chemotherapy [Figure 1].

Dysregulated expression of drug transporters and enzymes involved in drug metabolism

Plasma membrane transporters are pivotal for the uptake into and the efflux out of the cells of endogenous and exogenous molecules. They are divided in two big families: the ATP-binding cassette (ABC) family and the solute carrier (SLC) family. Members of both families serve a range of physiological roles but some of them also are determinants of drug disposition via affecting absorption, distribution, and excretion of drugs [Table 1].

Since the mid-1980s several members of the ABC family have been deemed to play an important role in the resistance to chemotherapy, given that their dysregulated expression may lead to a decreased uptake or an increased efflux of anticancer agents^[12-14]. Even though roughly half of the members have been shown to efflux anticancer agents in some context, the use of cell lines with high ABC transporter expression levels might have led to an overestimation of their role in cancer^[15]. In addition, transporters are usually parts of more complex networks usually under the same transcriptional regulation; therefore, their upregulation may be more of an epi-phenomenon than of a cause-related effect^[16]. A paradigmatic example of this are the data reported by Gao *et al.*^[17]. They first showed that, in colon cancer cell lines made resistant to 5-FU, drug treatment induced the expression of different ABC transporters as well as the activation of IRE1, an enzyme

Table 1. Dysregulated expression of drug transporters and enzymes involved in drug metabolism

Gene	Protein function	Correlation with drug resistance	Ref.
SLC22A3	Uptake of platinum compounds	Lower SLC22A3 expression correlates with worst PSF in patients receiving FOLFOX6 regimen	[20]
		Post-treatment intracellular concentration of OxPt is higher in SLC22A3-overexpressing cells; upregulation of SLC22A3 in mouse xenografts rendered tumors more responsive to OxPt treatment	[21]
SLC31A1	Copper influx transporter, involved also in OxPt intake	SLC31A1 level predicts prolonged survival and enhanced response to platinum-based regimens in cancer patients with several epithelial cancers	[24]
ATP7B	Copper efflux transporter, involved also in OxPt efflux	Increased levels of ATP7B are associated with poor outcome in CRC patients receiving oxaliplatin-based chemotherapy	[23]
CYP1A2/ CYP2A6	Cytochrome P450 enzymes involved in drug metabolism	Increased expression in 5-FU-resistant HCT116 CRC cell line; addition of the CYP450 inhibitor phenylpyrrole enhanced 5-FU-induced cytotoxicity in 5-FU-resistant cells	[25]
CYP3A5		Higher intratumoral expression of CYP3A5 in patients with CRC who do not respond to irinotecan-based chemotherapy	[29]
TYMS	Enzyme that maintains the dTMP pool critical for DNA replication and repair and is inhibited by 5-FU	Increased expression of TYMS in pretreatment tumor biopsies identified tumors non-responsive to 5-FU-based therapy	[26]

PSF: Progression-free survival; OxPt: oxaliplatin; 5-FU: 5-fluorouracil; FOLFOX: 5-FU + leucovorin + oxaliplatin.

involved in the unfolded protein response ensuing from endoplasmic reticulum stress^[18]. Disabling the enzyme, by both a specific inhibitor and by RNA silencing, they observed a decrease in the expression of the transporters as well as the sensitization to 5-FU. Given that the unfolded protein response is a complex response where several genes are regulated downstream of IRE1^[19], their experiments do not rule out that the sensitization might be due to the suppression (or activation) of other components of the response. Therefore, the decrease in the expression of the transporters simply correlates with the sensitization effect without a clear cause-effect relationship having been established.

For decades now plenty of experimental data have been produced - both in *in vitro* and *in vivo* systems - showing that the increased expression of several members correlate with increased resistance to chemotherapeutic agents as well as their inhibition by specific inhibitors could restore drug sensitivity^[12,13]. Although the substrates and key roles for most of these transporters have been identified, the extent to which these transporters play an effective role in clinical multidrug resistance has not yet been clarified^[15,16], not in general nor in the specific case of CRC. In fact, *ex-vivo* data are still pretty inconclusive: for example ABCB1 expression is generally low in tumors, but for few exceptions, and specific inhibitors have clinically failed^[16].

On the other hand, some members of the SLC family 22 shown to be involved in the uptake of platinum compounds have been more directly linked to drug efficacy. For example, in a retrospective study Gu *et al.*^[20] found that high expression of SLC22A3 (OCT3) may be a protective factor for CRC patients postoperatively treated with FOLFOX6 as a first-line adjuvant chemotherapy. In line with this, the same group also demonstrated in *in vitro* and *in vivo* experimental systems that the cellular concentration of oxaliplatin and its cytotoxicity were significantly increased in response to high expression of OCT3, whereas OCT3 knockdown directly increased the invasion and migration of colon cancer cells. In addition, upregulation of OCT3 expression in colon cancer xenografts via treatment with the DNA methyltransferase inhibitor decitabine increased the cellular concentration of the drug and improved its curative effect^[21]. Key mediators for oxaliplatin accumulation inside the cells are also a series of proteins initially identified as copper transporters. It has been shown that the major copper influx transporter SLC31A1 (CTR1) regulates tumor cell uptake whereas the two copper efflux transporters ATP7A and ATP7B regulate the efflux^[22].

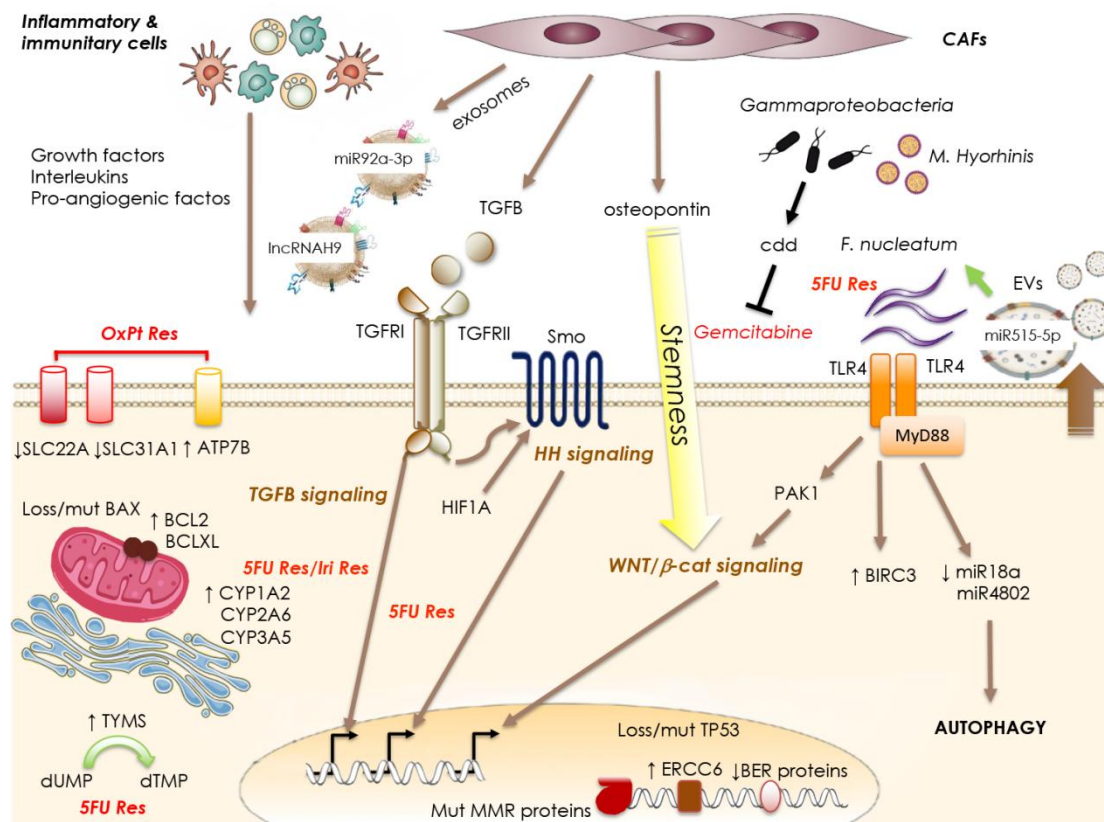


Figure 1. Mechanisms of resistance to chemotherapy. Tumor cell-intrinsic mechanisms may involve: dysregulated expression of drug transporters (SLC family members or ATP7B) and enzymes involved in drug metabolism (CYP family members), imbalanced expression of anti-/pro-apoptotic molecules (BAX mutation/loss or increased BCL2 expression), or dysregulation of DNA repair mechanisms and checkpoints (*TP53* mutation/loss, MMR proteins mutation, diminished expression of BER proteins, or increased ERCC6 expression). External signals acting on the tumor cells to trigger resistance may derive from the cells populating the tumoral niche such as the CAFs releasing TGFβ, osteopontin and exosomes containing specific lncRNAs and miRs. In addition, inflammatory and immunitary cells of the niche release a number of interleukins, growth factors, pro-angiogenic factors. Also, specific components of the microbiota can contribute to the resistance to chemotherapy by directly inactivating the drug (Gammaproteobacterial or *M. hyorhinis*) or by engaging the TLR4/MyD88 system to transduce pro-survival and autophagic signals. SLC: Solute carrier; MMR: mismatch-repair system; CAFs: cancer-associated fibroblast.

Accordingly, it has been reported that increased levels of ATP7B are associated with poor outcome in CRC patients receiving oxaliplatin-based chemotherapy^[23], whereas a large meta-analysis of literatures and datasets performed by Sun *et al.*^[24] revealed that high CTR1 level predicts prolonged survival and enhanced response to platinum-based regimens in cancer patients with a number of epithelial cancers.

A change in the expression or activation of enzymes involved in drug metabolism by cancer cells can enhance the catabolism of the drugs or result in diminished activation of prodrugs. In both cases, the result is an impairment of the pharmacological action of the chemotherapeutic agent [Table 1]. For example, Untereiner *et al.*^[25] produced a 5-FU-resistant HCT116 CRC cell line characterized by a significant increase in the expression of the drug-metabolizing cytochrome P450 enzymes CYP1A2 and CYP2A6. Accordingly, they reported that the addition of the CYP450 inhibitor phenylpyrrole enhanced 5-FU-induced cytotoxicity in 5-FU-resistant cells^[25]. Also, increased expression of thymidylate synthase (the enzyme inhibited by 5-FU) in pretreatment tumor biopsies could identify tumors that would be non-responsive to 5-FU-based therapy^[26]. At variance, downregulation of thymidine phosphorylase (which plays an essential role in activating the oral prodrug capecitabine to 5-FU) causes resistance via insufficient drug activation^[27].

Irinotecan undergoes extensive metabolism in both the liver and the intestine; it is converted to inactive metabolites by CYP3A4 and CYP3A5^[28]. Studying a CRC patient cohort, Buck *et al.*^[29] recently reported an association between the response to irinotecan and the expression CYP3A5; in fact, they found a significantly higher intratumoral expression of CYP3A5 in patients with CRC who do not respond to irinotecan-based chemotherapy and thus suggested a causal role of CYP3A5 in tumor resistance.

Dysregulation of DNA repair mechanisms and checkpoints

5-FU and all the most used drugs for treating CRC act by inducing, directly or indirectly, DNA damage and consequently activate cell's DNA damage response. Depending on the entity of the damage and on the functionality of the DNA damage response, apoptosis can be the outcome. In fact, several DNA repair mechanisms can intervene to remove or repair drug-induced damage thus avoiding cytotoxicity, and their dysregulation can contribute to the drug-resistant phenotype [Table 2]. For example, ERCC6 - a member of the excision repair cross-complementation (ERCC) family of enzymes, involved in the nucleotide excision repair pathway (NER) - is upregulated in CRC tissues compared to matched non-tumoral adjacent tissues and is also upregulated in patients resistant to 5-FU treatment. Conversely, low ERCC6 expression is associated with better response to chemotherapy and survival in CRC^[30].

Activity of the base-excision repair (BER) system is pivotal in determining 5-FU-induced cytotoxicity in cells concomitantly defective for components of the mismatch-repair system (dMMR), as shown by the fact that CRC patients expressing high levels of BER proteins have more aggressive tumors and poor outcomes after chemotherapy^[31]. Of note, zelpolib, a specific inhibitor of DNA polymerase δ an essential component of both NER and BER pathways - has been recently synthesized and shown to render cells sensitive to PARP inhibitors^[32]. Therefore, it would be of interest to assess whether PARP inhibitors are cytotoxic in ERCC6-overexpressing and MMR/BER defective 5-FU-resistant models.

MMR status is particularly important in CRC given that around 15% of patients have one or more components (*MLH1*, *MLH3*, *MSH2*, or *MSH3*) mutated or silenced, often with a microsatellite instability (MSI) phenotype. Notably, patients with stages II and III CRC are less responsive, if not at all, to 5-FU-based chemotherapy whereas a better response is achievable in patients with MMR-proficient (pMMR) tumors^[33,34]. In addition, MMR phenotype is also predictive of resistance to oxaliplatin-based chemotherapy^[35]. Notably, collections of evidence are accumulating that dMMR and MSI-high (MSI-H) heavily pre-treated patients (at least two prior lines of therapy for metastatic disease) show a durable clinical benefit when treated with programmed cell death protein 1 (PD-1) inhibitors, particularly in the metastatic setting^[36].

The response to DNA damage is tightly controlled by DNA damage checkpoints and their malfunctioning may allow the survival of damaged cells and the selection of new mutations. In this case, the resistance to chemotherapy as well as the tumor progression are favored characteristics. The best-known DNA damage checkpoint, mutated or lost in 50% to 70% of CRC cases, is *TP53* which makes it the gene with the highest mutation rate in CRC^[37,38]. Loss or impairment of *TP53* have been shown to affect the response to chemotherapy in several *in vitro* and *in vivo* systems^[37], to predict the poor response of patients with mCRC treated with chemotherapy^[38], and be associated with poor survival after FOLFOX therapy^[39,40].

Many promising synthetic lethal vulnerabilities, whose targeting kills p53-null drug resistant-resistant CRC cells, have been identified by an shRNA screen performed in our lab^[41]. Several of them have successively been validated by other labs such as PIM-1^[42], TRIB3^[43], EPHA2^[44,45], CHK1^[46], and VEGFR2^[47]. We focused our studies particularly on two targets: GSK3B and p65BTK. We showed that GSK3B is significantly more

Table 2. Dysregulation of DNA repair mechanisms and checkpoints

Gene/system	Protein function	Correlation with drug resistance	Ref.
ERCC6	Member of ERCC family of enzymes involved in the NER	Upregulated in CRC tissues compared to matched non-tumoral adjacent tissues Higher levels in patients resistant to 5-FU treatment low expression associated with better response to chemotherapy and survival	[30]
BER	Members of the BER system repairs bulky helix-distorting lesions	CRC patients with defects in components of the mismatch-repair system and expressing high levels of BER proteins have more aggressive tumors and poor outcomes after chemotherapy	[31]
MMR	Members of MMR are involved in recognizing and repairing erroneous insertion, deletion, and mis-incorporation of bases	dMMR patients with stages II and III CRC are less responsive, if not at all, to 5-FU-based chemotherapy whereas a better response is achievable in pMMR patients	[33,34]
TP53	DNA damage checkpoint	Loss or impairment of TP53 affects the response to chemotherapy in several <i>in vitro</i> and <i>in vivo</i> systems	[37]
		Loss or impairment of TP53 predict the poor response of patients with mCRC treated with chemotherapy	[38]
		Loss or impairment of TP53 associated with poor survival after FOLFOX therapy Loss or impairment of TP53 associated with poor survival after FOLFOX therapy	[39,40]

ERCC: Excision repair cross-complementation; NER: nucleotide excision repair pathway; BER: base-excision repair; MMR: mismatch-repair system; dMMR: defective MMR; pMMR: proficient MMR.

activated in drug-resistant vs. responsive CRC patients and is associated with cancer progression, poor response to therapy, and worse OS. Experimentally, we demonstrated that in the absence of p53, GSK3B activity allows cells to survive, despite treatment with DNA-damaging drugs, by sustaining DNA repair and that its downregulation restored sensitivity to 5-FU of p53-null colon cancer cells - both in *in vitro* and in *in vivo* models - via induction of regulated necrosis^[48]. Moreover, we also demonstrated that GSK3A is redundant with GSK3B modulating drug resistance and chemotherapy-induced regulated necrosis^[49]. A general role for GSK3B in sustaining resistance to chemotherapy has been validated also in other types of cancers and 9-ING-41, a novel GSK3B inhibitor developed by actuate therapeutics, is currently undergoing phase 1 and phase 2 trials, as a single agent and in combination with cytotoxic agents, in patients with refractory cancers, including CRCs^[9]. p65BTK is a novel isoform of the Bruton's tyrosine kinase we isolated from the screening and subsequently characterized. Compared to the known Bruton's tyrosine kinase (BTK) expressed in bone marrow-derived cell lineages, p65BTK lacks a stretch of 86 amino acids at the N-term and is translated from an mRNA containing a different first exon. Protein abundance is regulated at the post-transcriptional level and under the control of RAS/ERK pathway. Moreover, p65BTK is endowed with strong transforming activity that depends on ERK1/2 and its inhibition abolishes RAS transforming activity. Accordingly, p65BTK overexpression in CRC tissues correlates with ERK1/2 activation^[50], histotype, and cancer progression^[51]. p65BTK silencing or chemical inhibition affects the growth of CRC cells and overcomes the 5-FU resistance of p53-null CRC cells by abolishing a 5-FU-elicited TGFβ1 protective response and triggering E2F-dependent apoptosis. In addition, the combination of BTK inhibitors with 5-FU is cytotoxic for p53-null patient-derived organoids and significantly reduced the growth of xenografted tumors, thus giving the proof-of-concept for suggesting the use of BTK inhibitors in combination with 5-FU as a novel therapeutic approach in CRC patients^[51]. Further studies from our lab indicate p65BTK as an actionable target in different solid tumors other than CRC. In fact, preclinical data indicate that depending on the tumor type, BTK inhibitors used alone can induce cytotoxicity in gliomas^[52], be more effective than standard-of-care (SOC) chemotherapy in drug-resistant ovarian cancer^[53] or can kill drug-resistant tumor cells when used in combination with SOC chemotherapy or targeted therapy in non-small-cell lung cancer^[54], and melanomas (unpublished data).

Interestingly, its targeting is effective in cells with p53 loss and defects along the RAS/MAPK pathway, making it an actionable target for a broad range of solid tumors resistant to SOC chemotherapy. Notably several drugs targeting BTK are already in clinic for certain types of B-cell malignancies (e.g., ibrutinib, acalabrutinib, and zanubrutinib), whereas several others are in clinical trial for B-cell malignancies (e.g., orelabrutinib, spebrutinib, pirtobrutinib, and BGB-3111) and for different type of diseases characterized by excessive B-cell activation (e.g., remibrutinib, renebrutinib, tolebrutinib, and rilzabrutinib). Thus, assessing their efficacy in drug-resistant CRCs and other solid tumors would be feasible and advantageous.

Imbalanced expression of anti-/pro-apoptotic molecules

Drug resistance has been demonstrated to be associated with low levels of the pro-apoptotic BAX protein or its loss^[55,56], which can occur in CRC patients because of inactivating mutation or somatic frameshift mutation in the dMMR setting^[57]. In a low-expressing experimental CRC model, its re-induction by using andrographolide, a natural diterpenoid, restored the apoptotic response to 5-FU of drug-resistant CRC cells^[58]. Drug resistance has also been associated with increased levels of the anti-apoptotic BCL-XL protein, which largely occurs in CRC either by amplification or by overexpression^[59]. Several molecules antagonizing BCL-XL, the so-called BH3-mimetics, are currently being tested in experimental models in combination with chemo- or targeted therapy. For example, ABT-737 has been shown to improve the response to oxaliplatin in a *TP53*wt/*KRAS*mut background^[60]. Both ABT-737 and WEHI-539 have been shown to lower the apoptotic threshold by increasing the mitochondrial priming, thus sensitizing resistant CRC cells to chemotherapy; also, Ch282-5 potentiated the response to oxaliplatin both *in vitro* and *in vivo*^[61]. On the other hand, ABT-263 has been proven to overcome hypoxia-driven radioresistance and improve radiotherapy^[62]. Several BH-3 mimetics are currently being tested in clinical trials, even though not for CRC, but mainly for hematological malignancies and other solid tumors^[59]. Hence, it may be hypothesized that in a near future these molecules will also be tested in CRC patients.

Cancer stem cells and the tumoral niche

It has been repeatedly demonstrated that in the bulk of the tumor population, a very small fraction is represented by cancer stem cells (CSCs) that are intrinsically resistant to chemotherapy. In addition, upon exposure to anticancer agents and radiotherapy they may enter a quiescent state, resistant to anti-proliferative drugs; once the therapy is suspended, they can self-renew and differentiate into heterogeneous lineages of cancer cells, thus driving tumor recurrence^[63]. Initially, several data indicated that CSCs upregulate drug-efflux pumps, have a superior DNA-repair capacity, and have enhanced antioxidant defenses^[64]. More recently, cell plasticity and, in particular, the ability of CSCs to adopt a quiescent state have also emerged as important drivers of drug resistance. In fact, lineage-tracing approaches have revealed that the potential of committed cells to move up and down the hierarchy of differentiation (“plasticity”) is more widespread than previously thought. Interestingly, several studies have provided evidence that both CSCs and non-CSCs are plastic and capable of undergoing phenotypic transitions in response to appropriate stimuli^[64]. Therefore, under stimuli coming from the tumoral niche - composed of mesenchymal cells, tumor-infiltrating immune cells (TIIC), endothelial cells, extracellular matrix, and inflammatory mediators - the stemness phenotype can be acquired also by non-CSCs. In particular, cancer cells that can enter a reversible drug-tolerant “persister” state in response to treatment have been described^[65]; this population is made of cycling and non-cycling persisters which arise from different cell lineages with distinct transcriptional and metabolic programs. Upregulation of antioxidant gene programs and a metabolic shift to fatty acid oxidation has been associated with persister proliferative capacity across multiple cancer types, including CRC. Notably, using different inhibitors to impede oxidative stress or metabolic reprogramming led to a significant reduction in the fraction of cycling persisters^[66].

In CRC it has been shown that chemotherapy enriches for cells with a CSC phenotype. However, a pivotal role for a full definition of functional stem cell is concomitantly played by tumor microenvironment (TME) properties and in particular by osteopontin - a multifunctional protein that can also act as a cytokine - produced by key cancer-associated fibroblasts (CAFs)^[67]. Recently, an escape mechanism leading to tumor re-growth after 5-FU treatment has been identified in a p53-mediated activation of the WNT/beta-catenin signaling, a pivotal pathway to sustain CRC CSCs. Accordingly, the addition of a WNT inhibitor to 5-FU effectively suppressed the CSCs and reduced tumor re-growth after discontinuing the treatment^[68]. Also, CRC CSCs can escape immune surveillance by avoiding recognition by the innate immune system and shape the TME through the release of exosomes, cytokines, and chemokines to generate an immunosuppressive niche that facilitates cancer progression^[69].

As mentioned above, TME cues from the tumoral niche can support drug resistance. Important players in this scenario are CAFs, which represent an essential component of tumoral stroma and produce several cytokines acting on tumor cells. Beyond osteopontin, another multifunctional cytokine released by CAFs is transforming growth factor beta (TGFB) that can act synergistically with hypoxia-induced tumor cell-expressed HIF1A to sustain 5-FU/oxaliplatin resistance via activation of the hedgehog pathway, as demonstrated by *in vitro* and *in vivo* experiments using patient-derived cells^[70]. Interestingly, 5-FU-induced TGFB production occurs also in CRC cells as a mechanism of resistance and targeting TGFBR1 restores the sensitivity of drug-resistant cells to 5-FU toxicity^[71]. In addition, the 5-FU-elicited TGFB1 protective action can also be abolished by the use of BTK inhibitors^[51]. Other than through cytokine release, CAFs can communicate with the cancer cell directly, by transferring exosomes. For example, it has been shown that exosomal transfer of miR-92a-3p to CRC cells activates the WNT/beta-catenin pathway and inhibits mitochondrial apoptosis, and contributes to cell stemness, epithelial-to-mesenchymal transition, metastasis, and resistance to 5-FU/oxaliplatin treatment^[72]. Also, exosomal transfer of lncRNA H19 has been found to promote the stemness and chemo-resistance of CRC via activation of the WNT/beta-catenin pathway due to its action as a competing endogenous RNA sponge for miR-141^[73]. Notably, these data further indicate WNT/beta-catenin pathway as a potentially actionable target to overcome chemotherapy resistance.

Exosomes can also be exchanged by cancer cells themselves either in normal conditions or upon chemotherapy. For example, it has been shown that miR-21 is significantly upregulated in exosomes purified from CRC cell lines and that adding them to the cells induces resistance against 5-FU through the downregulation of PDCD4^[74]. Exosomes derived from 5-FU-resistant cells instead are enriched in growth/differentiation factor 15 (GDF15) and dipeptidyl peptidase IV (DPP4), both of which proved to be potent inducers of angiogenesis^[75,76]. Accordingly, 5-FU-resistant CRC cells showed high microvascular density *in vivo*^[75]. Taken together these data indicate that GDF15 and DPP4 may be novel targets for inhibiting angiogenesis in 5-FU-resistant colon cancers.

Finally, in the tumoral niche, different types of TIICs are present that interact with cancer cells and the other components of the niche through cytokine production, eventually altering tumor growth and its response to drug therapy^[69,77]. TIICs in the TME have dual functions in cancer progression: TIIC-related inflammation facilitates tumorigenesis, but TIICs also harbor antitumor properties when appropriately activated. Cancer cell-secreted factors hijack TIIC functions to promote tumor development and metastasis and to suppress immune recognition^[69]. Accordingly, one of the most important progress in cancer treatment has been the recent addition to chemotherapy of the so-called immune checkpoint (ICIs) inhibitors that act by interrupting the immunosuppressive signals within the TME and reactivating antitumor immunity^[78].

The gut microbiota

Gut microbiota seems to be implicated in chemotherapy efficacy through numerous mechanisms [Table 3], including xenometabolism, immune interactions, and altered community structure. Evidence suggests a potential relationship between the presence of *Fusobacterium nucleatum* and resistance to 5-FU and oxaliplatin chemotherapy and no response to immunotherapy. For example, Yu et al.^[79] reported that *F. nucleatum* was abundant in CRC tissues in patients with recurrence post-chemotherapy and associated with clinicopathological characteristics. Mechanistically, *F. nucleatum* targeted TLR4 and MYD88 innate immune signaling and specific microRNAs to activate the autophagy pathway and support drug resistance^[79]. Other mechanisms by which *F. nucleatum* confers resistance to chemotherapy have been reported, such as the upregulation of BIRC3 expression (a member of the inhibitor of apoptosis family, IAPs)^[80] and the activation of the WNT/beta-catenin pathway via a TLR4/P-PAK1 cascade^[81]. In an animal model of CRC, the intratumor presence of bacteria belonging to the Gammaproteobacteria class and producing the long form of the bacterial enzyme cytidine deaminase, which mediates gemcitabine deamination, conferred resistance to gemcitabine; accordingly, the elimination of bacteria by ciprofloxacin treatment restored the response to chemotherapy. In addition, the presence of *Mycoplasma hyorhinis* determined resistance to gemcitabine^[82]. At variance, responses to oxaliplatin were reduced in efficacy in tumor-bearing mice that lacked microbiota^[83] indicating that the microbial population resident in the gut can affect both sensitivity and resistance to chemotherapy, being these effects modulated by different bacteria.

Finally, it has been recently shown that commensal bacteria can produce extracellular vesicles (EVs) able to deliver to the human cells bacterial RNA molecules with gene expression regulatory ability, thus suggesting that they might potentially regulate the expression of genes involved in drug resistance. The communication between commensal bacteria and host cells have been shown to be bi-directional suggesting a reciprocal regulation of gene expression and accordingly, biological cell function. An example of this communication having an impact in the development of drug resistance is offered by the previously mentioned study by Yu et al.^[79], where resistance to 5-FU and oxaliplatin has been shown to be mediated by *F. nucleatus*-induced autophagy through the TLR4/MYD88-mediated downregulation of miR-18a* and miR-4802. Conversely also intestinal epithelial cells exerted a reciprocal effect onto *F. nucleatus* by controlling its growth through the delivery of specific miRNAs, such as hsa-miR-515-5p. In CRC patients, altered expression of miR-515-5p might thus affect *F. nucleatus* proliferation and consequent response to chemotherapeutic drugs^[79]. EV-mediated intercellular communication between bacteria and cancer cells seems therefore to be another potential mechanism playing a role in determining the efficacy of cancer therapy and worthy of increasing attention.

RESISTANCE TO TARGETED THERAPY

According to ASCO guidelines, chemotherapy can be possibly integrated with anti-angiogenic agents such as bevacizumab or aflibercept (first-line and second-line treatment, for advanced CRC) and regorafenib (in patients with mCRC who have already received chemotherapy and other targeted therapies). In selected cases, chemotherapy may also be integrated with the addition of targeted therapy. For example, anti-EGFR (anti-epidermal growth factor receptor) monoclonal antibodies (e.g., cetuximab and panitumumab) are indicated only for *RAS*- and *BRAF*-wild type (wt) tumors since the mutation of these two genes confer resistance to the EGFR blockade. In addition, a combination using the *BRAF* inhibitor encorafenib and cetuximab may be used to treat patients with *BRAF*-mutant (mut) mCRC who have received at least one previous treatment. In the last decade, several tumor-expressed “immune checkpoints”, immunosuppressive molecules blocking antitumor immunity, have been identified and “checkpoint inhibitors” have been developed and entered the clinic. Among them are antibodies against programmed cell PD-1 or its ligand PD-L1 and cytotoxic T lymphocyte-associated protein 4 (CTLA-4). So far, immunotherapy has a limited use

Table 3. The gut microbiota and the response to chemotherapy/immunotherapy

Bacterium	Correlation with drug resistance	Mechanism	Ref.
<i>Fusobacterium nucleatum</i>	Abundant in CRC tissues of patients with recurrence post-chemotherapy and associated with clinicopathological characteristics	Targeting of TLR4 and MYD88 innate immune signaling and targeting specific microRNAs to activate the autophagy pathway Upregulation of BIRC3 expression Activation of the WNT/beta-catenin pathway via a TLR4/P-PAK1 cascade	[79] [80] [81]
Gammaaproteobacteria <i>Mycoplasma hyorhinis</i>	Resistance to gemcitabine reverted by eliminating bacteria by ciprofloxacin treatment	Production of the long form of the bacterial enzyme cytidine deaminase which mediates gemcitabine deamination	[82]
Whole microbiota	Reduction of the response to oxaliplatin in mice lacking microbiota		[83]
<i>Bacteroides thetaiotaomicron</i> <i>Bacteroides fragilis</i>	Their introduction in SPF mice models of CRC restored the response to anti-CTLA-4 treatment, absent in germ-free or antibiotic treated mice		[147]

SPF: Specific pathogen-free.

in CRC since PD-1 targeting monoclonal antibodies can be used only in selected cases of mCRCs bearing defects along the DNA damage response pathways. For example, pembrolizumab is used for the therapy of mCRCs that are MSI-H or dMMR. In contrast, nivolumab can be administered to patients with dMMR or MSI-H mCRC that has grown or spread after treatment with chemotherapy, either alone or in combination with ipilimumab (anti-CTLA-4 monoclonal antibody). Notably, the FDA has issued its approval for pembrolizumab as the first-line treatment of patients with dMMR/MSI-H mCRC in June 2020, even though neither the Japanese Pharmaceuticals and Medical Devices Agency nor the European Medicines Agency has yet approved pembrolizumab as the frontline regimen^[84].

To expand the range of possible combinations of precision drugs to add to chemotherapy several efforts have been made to better stratify patients and to understand the basis of resistance/insensitivity to targeted therapy.

Resistance to anti-EGFR blockade

Perhaps the best studied so far are the mechanisms and the determinants underlying the resistance to anti-EGFR drugs [Figure 2], given that they have been the first targeted drugs employed for the treatment of CRC, and are so far the most used [Tables 4 and 5]. The main genetic defects hampering the response to EGFR blockade are activating mutations leading to constitutive activation of signaling pathways downstream of EGFR such as mutations in *KRAS* (30%-40%), *NRAS* (4%), *BRAF* (7%-15%), or *PIK3CA* (17%-30%) genes and *PTEN* deletion or truncation (7%) which altogether account for unresponsiveness in around 70% of cases^[85,86]. It has been reported that in approximately 50% of *RAS*-wt patients, sensitivity to EGFR blockade is lost because of secondary occurring mutations^[87]. In a small fraction of the remaining resistant tumors two important biomarkers are emerging. Bardelli *et al.*^[88] initially reported that certain patients harboring *RAS*-wt gene and resistant to anti-EGFR therapy presented an amplification of the *MET* proto-oncogene that proved to be responsible for *de novo* and acquired resistance to anti-EGFR therapy. In fact, functional studies showed that *MET* activation conferred resistance to anti-EGFR therapy both *in vitro* and *in vivo* and could be overcome using *MET* inhibitors^[88]. Remarkably, examining circulating tumor DNA, it was possible to find *MET* amplification even before the recurrence became clinically evident. Much experimental evidence further supported the benefit of targeting *MET* in anti-EGFR-resistant CRCs and explored the mechanisms driven by *MET*. Among them, acquisition of cetuximab resistance was shown to be mediated by *TGFA* overexpression which in turn induced EGFR-*MET* interaction^[89]. Also, SRC activation promoted cetuximab resistance by directly interacting with *MET*; accordingly, pretreatment with

Table 4. Resistance to anti-EGFR blockade

Treatment	Mutational background	Mechanism	Ref.
Cetuximab	Activating mutations in <i>KRAS</i> , <i>NRAS</i> , <i>BRAF</i> or <i>PIK3CA</i> genes and <i>PTEN</i> deletion, truncation, or epigenetic silencing	Constitutive activation of signaling pathways downstream of EGFR	[85,86]
Cetuximab Panitumumab	<i>MET</i> amplification in wt <i>KRAS</i> setting	Activation of signaling pathways converging onto PIK3CA and MAPK; resistance bypassed using MET inhibitors	[88]
Cetuximab		TGFA overexpression which in turn induced EGFR-MET interaction	[89]
Cetuximab		Cetuximab-mediated MET activation via interaction with SRC and abolished by SRC inhibitors	[90]
Cetuximab	<i>ERBB2</i> amplification /mutations in quadruple (<i>KRAS</i> , <i>NRAS</i> , <i>BRAF</i> , and <i>PIK3CA</i>) wt setting	Constitutive activation of signaling pathways downstream of the receptor; resistance overcome by addition of anti- <i>ERBB2</i> agents	[97,98]
Cetuximab	<i>ERBB2</i> amplification and heregulin overexpression	<i>ERBB2</i> / <i>ERBB3</i> dimerization; resistance bypassed by silencing <i>ERBB2</i> and depleting heregulin	[101]
Intrinsic resistance to anti-EGFR agents	<i>ERBB2</i> activating mutations in <i>KRAS</i> -wt mCRCs	Constitutive activation of signaling pathways downstream of the receptor; resistance bypassed by dual targeting of <i>ERBB2</i> via trastuzumab and lapatinib	[103]
Cetuximab+Refametinib	<i>KRAS</i> -mut	PI3K-AKT pathway activation ensuing from autocrine loops and heterodimerization of multiple receptors (<i>ERBB2</i> , <i>ERBB3</i> , and <i>IGF1R</i>)	[112]
Cetuximab+FOLFIRI	<i>RAS</i> -wt mCRC	High levels of EPHA2 significantly correlated with worse PSF and increased progression rate in a cohort of patients; primary and acquired resistance to cetuximab reverted in <i>in vitro</i> and <i>in vivo</i> models by adding a specific EPHA2 inhibitor	[114]

FOLFIRI: Folinic acid + 5-fluorouracil + irinotecan; PSF: progression free survival.

SRC inhibitors abolished cetuximab-mediated MET activation and rendered CRC cells sensitive to cetuximab^[90]. Interestingly, concurrent inhibition of MET and SRC decreased viability and enhanced apoptosis in both *RAS*-wt and *RAS*-mut CRC cells. Therefore, combined inhibition of MET and SRC may be a promising strategy for treating of CRC, independent of anti-EGFR resistance^[91]. In addition, MET inhibition, by enhancing the formation of DNA double-strand breaks and possibly alleviating tumor hypoxia, has been found to sensitize CRC cells also to irradiation^[92], further expanding the actionability of MET in CRCs.

Despite experimental efficacy, the clinical trials performed so far did not confirm the expectations. In a phase 2 study the addition of the specific MET inhibitor tivantinib to cetuximab allowed only 10% of MET-high, *KRAS*-wt mCRC patients to achieve objective response, even though in a difficult-to-treat setting (tumor progression on cetuximab or panitumumab after a first-line chemotherapy)^[93].

In another phase 1/2 study addition of tivantinib to cetuximab + irinotecan was tested in *KRAS*-wt patients previously treated but who progressed or presented with mCRC. In these cases, the combination did not significantly improve progression-free survival (PFS), even though subgroup analyses trended in favor of tivantinib in patients with MET-high tumors, *PTEN*-low tumors, or those pretreated with oxaliplatin^[94]. One possible explanation for these disappointing

Table 5. Strategies to overcome resistance to EGFR inhibition

Drug(s)	Mutational background	Mechanism	Ref.
Cetuximab + Crizotinib	<i>MET</i> amplification	Double targeting of EGFR and <i>MET</i>	[88]
Cetuximab + PHA665752	Overexpression of TGF- α	Double targeting of EGFR and <i>MET</i>	[89]
Cetuximab + PHA665752	<i>RAS</i> -wt; <i>MET</i> activation	Double targeting of EGFR and <i>MET</i>	[90]
Cetuximab + Dasatinib		Double targeting of EGFR and <i>SRC</i>	
Cetuximab + Lapatinib	<i>ERBB2</i> amplification	Double targeting of EGFR and <i>ERBB2</i>	[97]
Cetuximab + Pertuzumab			
Trastuzumab + Neratinib	<i>ERBB2</i> amplification or mutation	Double targeting of <i>ERBB2</i>	[98]
Trastuzumab + Afatinib			
Trastuzumab + Lapatinib (clinical trial)	<i>ERBB2</i> overexpression; <i>RAS</i> -wt	Double targeting of <i>ERBB2</i>	[103]
Cetuximab + ALW-II-41-27	<i>EPHA2</i> overexpression	Double targeting of EGFR and <i>EPHA2</i>	[114]

PHA665752: Small-molecule inhibitor of *MET*; ALW-II-41-27: EPH family tyrosine kinase inhibitor.

clinical results might be that clinical efficacy has been obscured by a lack of standardization in *MET* assessment for patient stratification. Accordingly, a very recent paper indicated that subtyping of *MET* expression may be required to identify *MET*-addicted malignancies in CRC patients who will truly benefit from *MET* inhibition^[95].

In 2011 *ERBB2* gene amplification was reported in 7% of patients with CRC^[96]. Subsequently, *ERBB2* amplification or somatic mutations have been described by several studies, with highly different reported rates of positivity (up to 50%) likely due to several factors such as cohort heterogeneity, a small study population, antibody clone selection, staining platform, and different scoring system. Using a molecularly annotated platform of 85 mCRC patient-derived xenografts, Bertotti *et al.*^[97] identified *ERBB2* amplification as an actionable liability in cetuximab-resistant CRCs harboring wt *KRAS/NRAS/BRAF/PIK3CA*. Moreover, they showed that the addition of anti-*ERBB2* agents to anti-EGFR monoclonal antibodies overcame resistance and inhibited tumor growth^[97]. The same group also showed that tumor growth was reduced by single targeting of *ERBB2* in cetuximab-resistant, quadruple (i.e., *KRAS*, *NRAS*, *BRAF*, and *PIK3CA*) wt CRC patient derived xenografts with *ERBB2* mutations. However, only double targeting of EGFR and *ERBB2* led to durable tumor regression^[98].

Later, the role of *ERBB2* amplification/mutation in predicting response to anti-EGFR treatment was confirmed by different groups. Cremolini *et al.*^[99], conducted a prospective, case-control study to demonstrate the negative predictive impact of a panel of rare genomic alteration including *ERBB2* amplification/activating mutations, *MET* amplification, *ROS1/NTRK1-3/RET* rearrangements, and *PIK3CA* exon 20, *PTEN*, and *ALK* mutations. Of the resistant cases, 51.1% were associated with one of these candidate molecular alterations, *ERBB2* amplification being the most frequent (14.9%), followed by *MET* amplification (8.5%)^[99]. A retrospective study performed in *RAS/BRAF*-wt mCRC patients reported that anti-EGFR therapy allowed a PFS significantly longer in patients without *ERBB2* amplification than in those bearing the alteration^[100]. Shorter PFS and OS were demonstrated also in cetuximab-treated CRC patients with *ERBB2*-amplified tumors and higher serum heregulin levels. In addition, *in vitro* experiments proved that silencing *ERBB2* overexpression, as well as depleting heregulin - thus disrupting of *ERBB2/ERBB3* heterodimerization - restored the response to cetuximab^[101]. Notably, *ERBB2* amplification could be identified non only in tissues but also in circulating tumor DNA of CRC patients non-responsive to anti-EGFR therapy^[102]. Sartore-Bianchi *et al.*^[103], demonstrated that *ERBB2* activating mutations in *KRAS*-wt mCRCs predicted intrinsic resistance to anti-EGFR agents that could be bypassed by combining dual targeting *ERBB2* via trastuzumab (anti-*ERBB2* monoclonal antibody) and lapatinib (dual EGFR and *ERBB2* tyrosine kinase inhibitor). A phase 2 basket trial recently obtained an overall response rate of 32% when

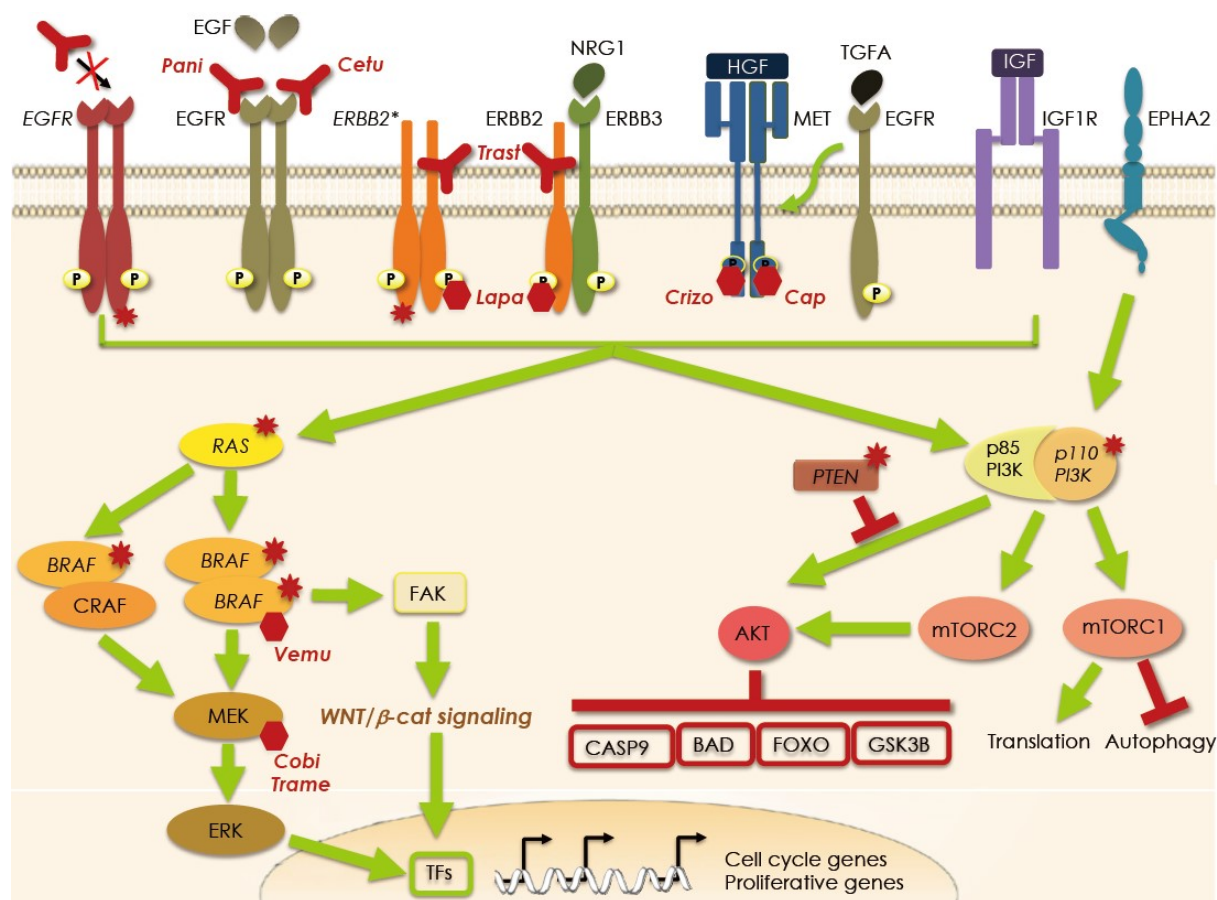


Figure 2. Mechanisms of resistance to targeted therapy against EGFR and mutated *BRAF*. Intrinsic resistance to EGFR blockade by panitumumab (Pani) and cetuximab (Cetu) occurs in case of activating mutations in the *EGFR* and its downstream effectors such as RAS, BRAF, and PIK3CA and when there is loss of *PTEN* either due to truncation or deletion. Acquired resistance stems from stimulation of collateral pathways impinging on the same downstream signaling activated by EGFR (i.e., the RAS/MAPK and the PIK3/AKT pathways). Hyperactivation of these pathways may be due to overexpression or mutation of *ERBB2*, heterodimerization of *ERBB2* and *ERBB3*, engagement of the *EGFR* by TGFA which in turn activates MET, MET overexpression, *EPHA2* overexpression, or *IGF1R* engagement. Strategies to overcome the insensitivity to EGFR blockade are directed at the inhibition of the collateral signaling such as using *ERBB2* blocking agents trastuzumab (Trast) and lapatinib (Lapa) and the MET inhibitors crizotinib (Crizo) and capmatinib (Cap). Resistance to the mutated BRAF inhibitor vemurafenib (Vemu) originates from the shifting in the choice of the dimerization companion. In the resistant cells instead of mutated BRAF homodimers, mutated BRAF/CRAF heterodimers are formed which are insensitive to the inhibitor and thus MAPK activation is refueled. To prevent heterodimerization a novel inhibitor, that specifically bind mutated BRAF homodimers has been developed. Another route of escape to mutant BRAF blockade has been described where activation of the WNT/ β -catenin signaling is triggered via FAK. Both MAPK and β -catenin signaling eventually activate a series of transcription factors (TFs) responsible for the transcription of proliferative genes. Currently, to prevent resistance to BRAF inhibition, a vertical blockade of the pathway is being tested in clinical trials using vemurafenib in combination with a MEK inhibitor such as cobimetinib (Cobi) or trametinib (Trame). Mutated proteins are indicated by the red stars and the italicized name.

using the dual targeting approach (pertuzumab and trastuzumab) in pretreated *ERBB2*-amplified mCRC patients^[104]. In addition, two other phase 2 clinical trials also identified *ERBB2* as a druggable target in refractory *KRAS*-wt mCRCs with *ERBB2* amplification^[105,106], and *ERBB2*-targeted combinations have been recently included in international guidelines for mCRC^[107].

Besides the above-mentioned clinical studies, several trials are currently undergoing where *ERBB2*-targeted antibody-drug conjugates (i.e., TDM-1, DS-8201, A166, ZW25, and ZW49) and novel tyrosine kinase inhibitors (i.e., tucatinib, sapitinib, neratinib, pyrotinib, pozoitinib, and ceralasertib) are being tested alone

or in different combinations^[108]. A recent study pinpointed that an optimal combination may require triple targeting. Mangiapane *et al.*^[109], using 60 CRC specimens obtained a collection of CSC-derived spheres which was then used to perform preclinical experiments to validate different therapeutic options. They found that high expression levels of ERBB2 occurred in spheres showing hyperactive PI3K/AKT pathway and proved that triple targeting of ERBB2, MEK and PI3K induces CSC death and regression of anti-EGFR-resistant tumor xenografts, including those carrying *KRAS* and *PIK3CA* mutation^[109].

Even though MAPK deregulation plays a pivotal role in both intrinsic and secondary resistance to anti-EGFR agents, other mechanisms (sometimes co-occurring) contribute or can account for secondary resistance, due to CRC molecular heterogeneity^[110]. For example, stimulation of EGFR results not only in the RAS/RAF/MAPK pathway but also in the PTEN-PI3K-AKT cascade activation^[111].

Recently, Vitiello *et al.*^[112] used four different *KRAS*-mut CRC cell lines rendered resistant to a combination of cetuximab and refametinib (a selective MEK-inhibitor) and demonstrated that PI3K-AKT pathway activation acts as an escape mechanism in this setting. They showed that autocrine loops and heterodimerization of multiple receptors lead to the activation of several receptor tyrosine kinase, such as ERBB2, ERBB3 and IGF1R, whose signaling onto the PI3K/AKT pathway allows to bypass the block imposed by the double targeting of EGFR and MEK^[112]. The effect on the response to cetuximab in the setting of the three most common *AKT1* activating mutations found in CRC patients (i.e., E17K, E49K, and L52R) was recently investigated by overexpressing them in a cetuximab-sensitive *KRAS*-wt CRC cell line. Interestingly, all of them impaired the cytotoxic response not only toward cetuximab but also to chemotherapy. In addition, also the most common mutations of *CTNNB1* (i.e., T41A, S45F, and S33P) were found to sustain resistance to the same agents^[113]. These data indicate that possible therapeutic strategies to counteract the resistance to EGFR-targeted therapy would therefore be the use of inhibitors of the PI3K/AKT pathway. Notably, trials to test AKT and PI3K inhibitors for CRC are currently undergoing.

A novel predictive biomarker of resistance and a potential therapeutic target for improving the response to anti-EGFR agents has recently been identified in EPHA2. Studying a cohort of 82 *RAS*-wt mCRC patients treated with FOLFIRI + cetuximab, Martini *et al.*^[114] found that 62.6% of patients expressed the tyrosine kinase receptor and that high levels of EPHA2 significantly correlated with worse PFS and increased progression rate. In *in vitro* models a specific EPHA2 inhibitor reverted primary and acquired resistance to cetuximab causing cell growth inhibition, inducing apoptosis and cell-cycle G1-G2 arrest. In xenografts experiments the treatment with the inhibitor upon progression with cetuximab significantly inhibited tumor growth^[114].

Resistance to BRAF inhibitors

The BRAF kinase, operating downstream of RAS along the pathway leading to ERK activation, is considered an oncogenic driver in CRC and its mutation arises in 7%-15% of patients with mCRC. Over 95% of *BRAF* mutations in mCRC occur in codon 600 (V600E) whereas non-V600E *BRAF* mutations occur only in about 2% of patients and define a clinically distinct subtype with a better prognosis. In general, patients with *BRAF*-mut CRC have impaired survival not only in the metastatic setting but also in non-metastatic disease, as compared with patients with *BRAF*-wt CRC, and are resistant to chemotherapy. In fact, the median OS is 4 to 6 months after failure of initial therapy. Currently, SOC is an aggressive strategy involving triplet chemotherapy and anti-VEGF agents, but no specific tailored therapeutic approach has been standardized since no optimal combinations have been reported yet. In fact, at variance with what was observed for melanoma, vemurafenib - the first specific BRAF^{V600E} inhibitor tested - showed modest clinical activity in mCRC patients with *BRAF*-mut tumors^[115]. In addition, no responses were observed in the 10 patients with

$BRAF^{V600E}$ mCRC enrolled in a phase 2 basket trial^[116]. Overall, only 5% of patients with $BRAF^{V600E}$ CRC respond to BRAF inhibitors^[117] indicating a very high level of intrinsic resistance to its blockade [Tables 6 and 7]. The reason for the unresponsiveness to vemurafenib was uncovered in two key studies where a paradoxical effect ensuing from BRAF inhibition was shown in $BRAF^{V600E}$ CRC models. $BRAF^{V600E}$ can signal as RAS-independent monomers or dimers - depending on levels of RAS activation in the tumor - but predominantly exists as a drug-sensitive monomer. Vemurafenib selectively inhibits BRAF monomers. It was discovered that $BRAF^{V600E}$ inhibition suppressed ERK-mediated negative feedback on EGFR activity, thus leading to EGFR-mediated reactivation of MAPK signaling, due to the formation of active RAF and CRAF protein dimers^[118,119]. Recently, PLX8394, a novel experimental BRAF inhibitor has been reported to inhibit ERK signaling by specifically disrupting BRAF-containing dimers, thus acting on tumors driven by dimeric BRAF mutants and opening a new possibility to overcome resistance to classic BRAF inhibitors^[120]. Interestingly, few possible targets for combinatorial treatment have been experimentally identified in $BRAF^{V600E}$ CRCs. For example, it has been shown that in this setting anti-apoptotic MCL1 is upregulated due to ERK-mediated phosphorylation which results in stabilization of the protein. Even though MEK inhibitor cobimetinib suppressed MCL-1 phosphorylation to a greater extent than did vemurafenib, it resulted in only mildly cytotoxic effects. At variance co-targeting MEK and MCL-1 (either via silencing or via a small-molecule antagonist) significantly increased cytotoxicity *in vitro* and reduced tumor growth *in vivo*^[121]. Chen *et al.*^[122] demonstrated that in $BRAF^{V600E}$ CRC cell lines BRAF inhibitors upregulated the WNT/beta-catenin pathway through activating FAK independently of EGFR and MEK signaling [Figure 2]. Accordingly, combined inhibition of BRAF/WNT pathways or BRAF/FAK pathways exerted strong synergistic antitumor both *in vitro* and *in vivo*^[122]. Recently, another mechanism of resistance to vemurafenib has been identified in the increased abundance and activity of nucleophosmin (NPM1), a protein that regulate centrosome duplication and histone assembly and that is induced by the inhibitor in resistant cells. Accordingly, pharmacological inhibition of NPM1 effectively restored the sensitivity of vemurafenib-resistant $BRAF$ -mut CRC cell lines^[123].

Given the EGFR reactivation observed in BRAF inhibitor-treated CRC models, dual targeting has been tested. Adding cetuximab to vemurafenib in xenografts experiments resulted in increased antitumor activity and improved survival^[124] and combined administration of BRAF and EGFR inhibitors induces tumor regression in most patients^[116,125-127]. However, within 6 months, resistance inevitably occurs. Analyzing matched tumor tissues obtained from eight patients before treatment and at the time of disease progression after therapy, Yaeger *et al.*^[128] found that in resistant tumors new alterations occurred in genes that encode components of the RAS/RAF pathway (activating mutations of *KRAS* or *NRAS* or amplification of *NRAS*-wt, *KRAS*-wt, or $BRAF^{V600E}$). They then overexpressed *NRAS*-wt or *KRAS* wt in $BRAF^{V600E}$ CRC cell lines sensitive to vemurafenib/cetuximab treatment, demonstrating that the increase in either of the two was sufficient to induce the presence of RAF and CRAF protein dimers (absent in sensitive cells) thus rendering the cells resistant to the combinatorial therapy^[128]. Therefore, it would be interesting to verify in this setting the effect of the inhibitor PLX8394 that acts by disrupting dimers^[120].

Preclinical and clinical data obtained in $BRAF^{V600E}$ melanoma models and patients indicated that simultaneous and vertical targeting of more than one node along the MAPK/ERK pathway, such as BRAF and MEK, could bypass the resistance to BRAF inhibitors^[129,130] and delay the onset of relapse. However, also this combination did not live up to expectations in $BRAF^{V600E}$ CRCs. In fact, combination treatment with BRAF plus MEK inhibitors, dabrafenib and trametinib, led to a median PFS of 3.5 months, with 56% of patients achieving stable disease, 9.3% partial response, and only 2.3% complete response^[131]. It has been recently shown that the combination of the BRAF inhibitor dabrafenib and the MEK inhibitor trametinib triggered a massive apoptotic response only in $BRAF^{V600E}$ CRC cells harboring also *TERT* promoter

Table 6. Resistance to BRAF inhibitors

BRAFi	Mutational background	Mechanism	Ref.
Vemurafenib	BRAF ^{V600E}	Only BRAF monomers inhibited by vemurafenib; EGFR-mediated reactivation of MAPK signaling, due to the formation of active RAF and CRAF protein dimers	[118, 119]
Vemurafenib	BRAF ^{V600E}	Upregulation of Wnt/ β -catenin pathway through activation of FAK	[122]
Vemurafenib	BRAF ^{V600E}	Upregulation of NPM1	[123]

Table 7. Strategies to overcome resistance to BRAF inhibitors

Drug(s)	Mutational background	Mechanism	Ref.
PLX8394	BRAF ^{V600E}	Specific inhibition of BRAF dimers; prevent EGFR-mediated reactivation of MAPK signaling	[120]
Cobimetinib + A-1210477	BRAF ^{V600E}	Double targeting of MEK and MCL-1	[121]
Vemurafenib + PF-562271	BRAF ^{V600E}	Double targeting of BRAF ^{V600E} and FAK	[122]
Vemurafenib + ICG-001		Double targeting of BRAF ^{V600E} and β -catenin	
Vemurafenib + PF-562271 + trametinib		Triple targeting of BRAF ^{V600E} , FAK, and MEK	
Vemurafenib + ICG-001 + trametinib		Triple targeting of BRAF ^{V600E} , β -cat, and MEK	
Vemurafenib + NSC348884	BRAF ^{V600E}	Double targeting of BRAF ^{V600E} and NPM1	[123]
Encorafenib + Cetuximab (clinical trial)	BRAF ^{V600E}	Double targeting of BRAF ^{V600E} and EGFR	[136]

PLX8394: RAF inhibitor; A-1210477: selective MCL-1 inhibitor; PF-562271: FAK inhibitor; ICG-001: beta-catenin inhibitor; NSC348884: nucleophosmin (NPM1) inhibitor.

mutations but not in BRAF^{V600E} cells lacking *TERT* mutations. Accordingly, the combination of inhibitors nearly completely abolished the growth of xenografted tumors BRAF^{V600E}/*TERT*-mut but had little effect on tumors harboring only BRAF^{V600E}. Notably, after the treatment was discontinued, doubly mutated tumors remained barely measurable whereas BRAF^{V600E} tumors regrew rapidly^[132]. These findings suggest that double testing for BRAF^{V600E} and *TERT* mutations may stratify patients for combinatorial therapy with BRAF plus MEK inhibitors.

Recent clinical trials investigated the benefit of targeting different nodes along the MAPK pathway in BRAF-mut mCRC^[133-135]. BEACON III was a three-arm phase 3 study that enrolled patients with BRAF^{V600E} mCRC tumors who progressed on one or two prior regimens. In this setting the safety and efficacy of encorafenib (BRAF inhibitor) and cetuximab with or without binimetinib (MEK inhibitor) were evaluated and compared with the control arm with SOC therapy (irinotecan/cetuximab or FOLFIRI/cetuximab). Both triplet and doublet therapy induced an overall response rate that was 10 times more than in the control arm. In addition, PFS tripled and mean OS doubled for the doublet and triplet arms vs. control arm. Little difference was observed between doublet and triplet arms^[136]. Based on these results, on April 2020, the FDA approved encorafenib in combination with cetuximab for mCRCs with a BRAF^{V600E} mutation^[137].

A final note, not directly related to resistance but pointing to alternative actionable targets in BRAF^{V600E} CRCs, should be made about immunotherapy. As previously mentioned, therapy with ICIs is limited to mCRCs bearing defects along DNA damage response pathways. Notably, around 60% of BRAF-mut CRCs also are MSI-H, a condition associated with a higher proportion of tumor infiltrating lymphocytes present in the tumor^[138]. Therefore, it is reasonable to suggest that ICIs could represent the new SOC for this subgroup^[139].

Resistance to anti-angiogenic therapy

The first anti-angiogenic agent entering the clinic for the treatment of mCRC has been bevacizumab, a humanized monoclonal antibody anti-VEGF-A which binds circulating VEGF-A and blocks the interaction with its cell surface receptors (VEGFR1 and 2), thus reducing microvascular growth and inhibiting the blood supply to the tumor tissues^[140]. In recent years the development of anti-angiogenic agents has increased, leading to the addition to of aflibercept (second-line treatment for advanced CRC) and regorafenib (in patients with mCRC who have already received chemotherapy and other targeted therapies). Aflibercept is a recombinant fusion protein consisting of VEGF-binding portions from the extracellular domains of human VEGFR1 and 2, that are fused to the Fc portion of the human IgG1 immunoglobulin and acts like a “VEGF trap”. Regorafenib is multi-kinase inhibitor targeting angiogenic, stromal, and oncogenic receptor tyrosine kinase that shows strong anti-angiogenic activity due to its dual targeted VEGFR2-TIE2 tyrosine kinase inhibition. In addition, other anti-angiogenic drugs are in preclinical and clinical phase I-III studies^[141].

Despite initial promising preclinical results, anti-angiogenic monotherapies did not lead to many clinical benefits, due to primary or acquired resistance, through activation of alternative mechanisms that support vascularization and tumor growth [Figure 3]. Clinical data show that anti-angiogenesis therapies can prolong PFS but have a limited impact on OS and do not set a permanent cure in CRC^[142]. This limited clinical significance is likely due to the fact that treatment with antiangiogenic agents causes a discontinuity in the blood vessel network, which leads to a new hypoxic condition with activation of vascular mimicry, alternative pro-angiogenic pathways and recruitment of endothelial cells derived from bone marrow^[143].

So far, the mechanisms of resistance to anti-VEGF therapy have not been fully elucidated. The main factor used by cancer cells to adapt to oxygen deprivation is hypoxia-inducible factor (HIF) of which three members are known (i.e., HIF1A, HIF2A, and HIF3A). During hypoxia, HIF1A translocates into the cell nucleus to form the activated HIF1 complex along with HIF1B. Hypoxic contexts induce upregulation of VEGF expression through the upstream transcription factor HIF1A. These factors induce tumors to acquire more angiogenic and invasive potentials, promoting metastasis^[144]. Preclinical studies and clinical trials suggest that inhibition of a specific growth factor can induce the expression of others^[145]. For instance, in a phase II study in which mCRC patients were treated with a combination of 5-FU, leucovorin and irinotecan (FOLFIRI) and bevacizumab, several angiogenic factors, including the placental growth factor and hepatocyte growth factor, were found to increase before disease progression^[146]. Activin receptor-like kinase 1 (ACVRL1) is an emerging target for antiangiogenic therapy; it is a TGFB transmembrane receptor expressed preferentially from proliferating endothelial cells and is crucial to TGFB-mediated angiogenesis. Significantly, VEGF-A and ACVRL1 expression have been shown to regulate angiogenesis. Data support the hypothesis that ACVRL1 expression and function following anti-VEGF/VEGFR inhibitor treatment may contribute to vascular adaptation from the VEGF-driven neovascularization^[147]. In particular, the TGFB axis may provide an escape pathway for tumor angiogenesis^[148]. Thus, agents that inhibit TGFB signaling combined with VEGF/VEGFR- therapies may potentiate treatment response.

Moreover, alternative angiogenic pathway can contribute to the escape from anti-VEGF treatment such as the angiopoietin-TIE signaling system. TIE-1 and -2 are specific vascular receptor tyrosine kinase that control vascular permeability and the development and remodeling of blood vessels through angiopoietin-1 (ANGPT1) and angiopoietin-2 (ANGPT2). While ANGPT1 permits maturation or stabilization of blood vessels through TIE2, ANGPT2 blocks this pathway causing remodeling of vascular sprouts subsequent to exposure to VEGF^[149]. High serum levels of ANGPT2 have been related to poor response to bevacizumab treatment^[150], suggesting that ANGPT2 has a critical role in the resistance mechanism against anti-VEGF therapy^[151].

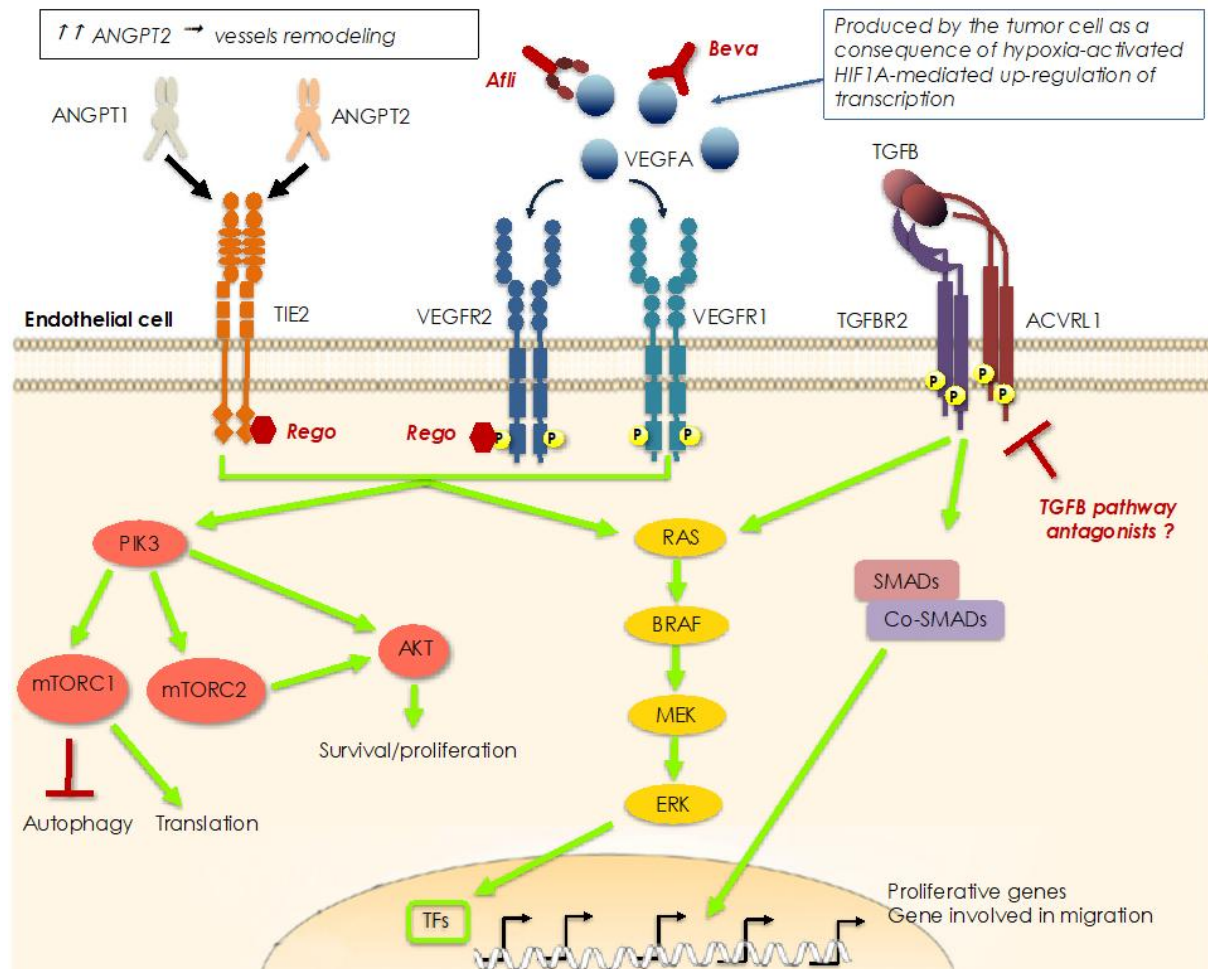


Figure 3. Mechanisms of resistance to anti-angiogenic therapy. Hyperproduction of VEGFA is a consequence of the hypoxic status in the center of the tumor which activates HIF1A, a transcription factor that regulates VEGFA transcription. Overproduction of VEGFA can be blocked by monoclonal antibodies (bevacizumab, Beva) or a VEGF-trap (aflibercept, Afli). Alternatively, the signal can be blocked downstream of the dedicated receptor by small kinase inhibitors like regorafenib (Rego), which can also inhibit the TIE2 receptor, thus imposing a double anti-angiogenic blockade. In fact, both receptors are critical in stimulating the proliferation and migration of the endothelial cells, necessary for the formation of new vessels into and around the tumor mass. In particular, TIE2 receptor is regulated by ANGPT1 and 2, the former inducing signals involved in maturation and stabilization of blood vessels, whereas the latter blocks this signaling and triggers remodeling of vascular sprouts. Overproduction of ANGPT2 can drive a parallel neo-angiogenic signaling when VEGFR-driven signaling is impeded by Beva-based therapy. In addition, another parallel neo-angiogenic pathway that can act as an escape route to VEGFA blockade is initiated by TGFβ binding to a multimeric receptor formed by a TGFβ2 dimer in complex with an activin receptor-like kinase 1 (ACVR1) dimer.

In preclinical models, the double block of VEGF and ANGPT2 inhibited revascularization and tumor progression of tumors resistant to anti-VEGF therapy^[152,153]. Finally, cytokines have also been involved in mediating resistance to anti-angiogenic therapy. IL-17 and its downstream factor, granulocyte colony-stimulating factor (G-CSF), are the leading players of inflammation; it has been reported that a high level of IL-17 induces cells to produce a paracrine network that confers resistance to anti-VEGF therapy. Serum G-CSF levels in CRC patients are higher than those in healthy volunteers and are associated with the stage of tumor progression^[154,155].

Interestingly, a novel anti-angiogenic approach that might help in circumventing resistance to anti-angiogenic therapies could be represented by metronomic chemotherapy, a schedule where low doses of chemotherapy are administered chronically. In fact, several studies demonstrated that the administration of 5-FU under metronomic chemotherapy schedule induces an antiangiogenic effect behind the cytotoxic effect^[156]. In addition, it has been reported a reasonable disease control with minimal side effects and good quality of life in elderly or heavily pre-treated patients under metronomic chemotherapy schedule. Moreover, a phase III randomized trial has shown that maintenance therapy with metronomic capecitabine plus bevacizumab following cycles of conventional treatment with capecitabine + oxaliplatin + bevacizumab significantly improved PFS compared to the observation group with no worsening of quality of life^[157].

Resistance to immune checkpoint inhibitors

Compared to pMMR/microsatellite stable CRCs, dMMR/MSI-H CRCs - because of the defects in repairing DNA damage/insertion of microsatellites - present a high mutation burden and produce a plethora of immunogenic neoantigens on the MHC, thus recruiting more tumor infiltrating lymphocytes. However, dMMR/MSI-H CRCs also highly upregulate the expression of immune checkpoints - (i.e., PD-1 ligands, CTLA-4 ligand, LAG-3, and IDO1) that account for the suppression of an active immune response despite the high tumor infiltrating lymphocyte count [Figure 4]^[158]. Because of this scenario dMMR/MSI-H CRCs have been shown to be sensitive to treatment with ICIs in several phase 2 trials^[84,158-160]. Notably, the KEYNOTE-177 phase 3 trial compared the effect of anti-PD-1 pembrolizumab vs. SOC chemotherapy given as a first line therapy. A significant clinical benefit of pembrolizumab resulting in the doubling of PSF was evident and 83% of pembrolizumab responders were still responding after 2 years or longer, compared to the 35% of the chemotherapy responder. However, 30% of pembrolizumab-treated patients had primary resistance^[161] indicating that additional therapeutic strategies are needed in the field of immunotherapy. Interestingly, Checkmate-142 phase 2 clinical trial reported that a double targeting strategy given as a first-line therapy led to significant and clinically meaningful improvements in patients' outcomes. Specifically, anti-PD-1 nivolumab was administered together with anti-CTLA4 ipilimumab, and the PSF rate at 12-month was 77% compared to 55% reported with single PD-1 blockade in the KEYNOTE-177 study^[84]. At variance with patients with dMMR/MSI-H CRC those with microsatellite stable mCRC had very limited clinical benefit when receiving the combination with CTLA-4 and PD-L1 inhibitors^[160]. Given that about 95% of mCRC cases are pMMR/microsatellite stable tumors and resistant to ICIs, several efforts are focused on the understanding of the mechanisms of resistance to immunotherapy for the development of new therapeutic approaches. Notably, another promising inhibitor to be added to the combination of ICIs is relatlimab, a monoclonal antibody that binds to LAG-3, a checkpoint molecule that functions to negatively regulate homeostasis of T- and B-cells and NK cells^[162]. So far, it has been tested in clinical trials for treating melanomas and, interestingly, in a phase 3 trial in patients with newly diagnosed inoperable or metastatic melanomas, its combination with nivolumab doubled PSF^[162]. In addition, a newly characterized monoclonal anti-LAG-3 antibody resulted in a significant delay in tumor growth when combined with PD-1 blockade in mice transplanted with colorectal cancer cells^[163]. These results suggest that the addition of anti-LAG-3 monoclonal antibodies might improve the response to currently used ICIs also in CRC. Finally, a brief mention about IDO1 inhibitors is due, given that this enzyme is overexpressed in CRC tissues. IDO1 catalyzes the oxidative cleavage of tryptophan to kynurein, a metabolite responsible for an immunosuppressive environment via the blockade of the activation of effector cells and the stimulation of immunosuppressive cells^[164]. In particular, high levels of kynurein have been shown to predict resistance to PD-1 blockade and OS upon administration of nivolumab in advanced melanoma and renal cell carcinoma patients. Remarkably, in preclinical models IDO inhibitors had negligible effect when used alone but resulted synergic with anti-CTL-A4 and anti-PD-1 therapies in controlling cancer burden and favoring mice survival^[165]. Therefore, different inhibitors are currently being studied in several tumor types as co-administered with anti-PD-1 antibodies (i.e., nivolumab or pembrolizumab) or anti-PD-L1 antibodies (i.e.,

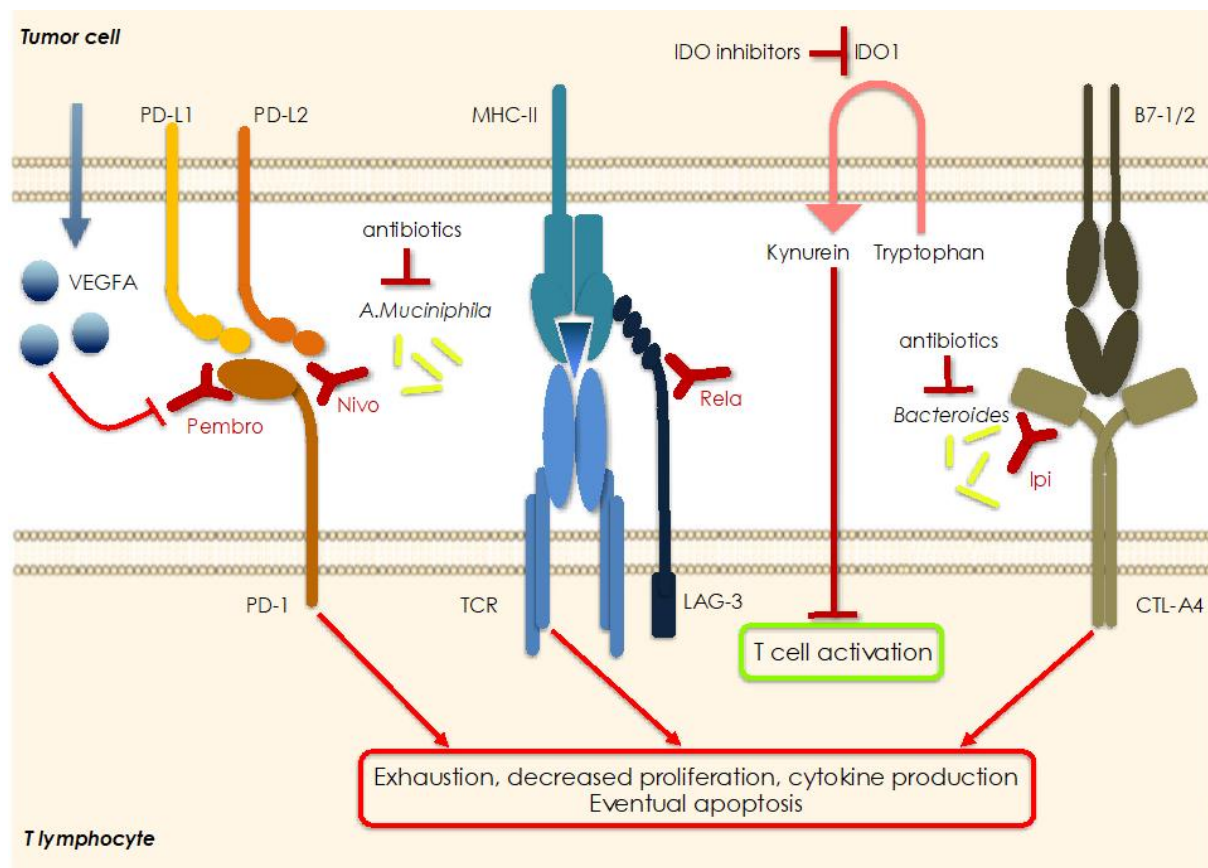


Figure 4. Mechanisms of resistance to immuno-therapy. Cancer cells can express several immunosuppressive molecules that can be blocked using specific inhibitors in order to re-activate the anti-tumor immune response. Often, they are redundant so that the re-activation of one pathway may be compensated by hyperactivation of a different immunosuppressive route so that resistance to therapy is the result. Resistance to anti-PD1 blockade may be due to overproduction and release of VEGFA, as well as by overexpression of IDO1 with consequent increased levels of kynurein in the microenvironment. Specific components of the microbiota are also necessary for the successful blockade of PD-1 and CTLA-4 indicating that antibiotics may represent a resistance factor to ICIs. Finally, concurrent blockade of two or more immune checkpoints has been shown to improve the response and overcome the resistance to ICIs. Pembro: Pembrolizumab; Nivo: nivolumab; Rela: relatlimab; Ipi: ipilumab; IDO1: indoleamine 2, 3-dioxygenase 1.

atezolizumab or durvalumab)^[166] and the same approach is to be envisaged for ICIs-resistant CRCs.

An immunosuppressive role has been reported for VEGF, which can act via different mechanisms such as by decreasing the number of TILs and activating immune checkpoint molecules^[167]. Notably, in a CRC mouse model it has been reported that addition of anti-angiogenic therapy reduced intrinsic resistance to an anti-PD-1 antibody via normalizing tumor vascularization and reducing hypoxia^[168]. Several trials are ongoing to evaluate the efficacy of combining ICIs with an anti-angiogenic strategy plus chemotherapy, being the molecules tested bevacizumab and regorafenib.

Recently, several studies have shown that the gut microbiota plays a key role in regulating the efficacy of ICIs for cancer treatment of different solid tumors [Table 3, Figure 4]^[169]. For example, the treatment with an anti-CTLA-4 monoclonal antibody controlled the growth of different tumor models (including a CRC model) in mice maintained in specific pathogen-free conditions and in the presence of specific *Bacteroides*, but not in germ-free mice and mice previously treated with antibiotics. Therefore, it appears that the gut microbiota might regulate the efficacy of immunotherapy with anti-CTLA-4. Accordingly, the introduction

of two specific *Bacteroides* species (i.e., *B. thetaiotaomicron* and *B. fragilis*) in germ-free mice and antibiotics-treated mice restored the response to anti-CTLA-4 treatment^[170]. Notably, a series of studies in melanoma mouse models and patients uncovered other microbiota components as instrumental in determining the response to ICIs. For example, in a melanoma mouse model the addition of the commensal gut *Bifidobacterium* to PD-L1 checkpoint blockade nearly abolished the growth of scarcely sensitive tumors^[171]. Comparative analysis of the oral and gut microbiome of melanoma patients undergoing anti-PD-1 immunotherapy revealed significant differences in the diversity and composition of the microbiome of responders vs. non-responders. Similarly, the analysis of patient fecal microbiome samples showed significant diversity and relative abundance of bacteria of the Ruminococcaceae family in responding patients^[172]. Analysis of baseline stool samples from metastatic melanoma patients before immunotherapy uncovered significant association between commensal microbial composition and clinical response. Bacterial species more abundant in responders included *Bifidobacterium longum*, *Collinsella aerofaciens*, and *Enterococcus faecium*. Accordingly, in a mouse model fecal microbiota transplantation from responding patients in germ-free mice improved tumor control, augmented T cell responses, and increased efficacy of anti-PD-L1 therapy^[173]. Routy et al.^[174] showed that fecal microbiota transplantation from cancer patients who responded to ICIs into germ-free or antibiotic-treated mice improved the efficacy of anti-PD-1 therapy, whereas fecal microbiota transplantation from non-responding patients was ineffective. Profiling patients' stool samples revealed low levels of the bacterium *Akkermansia muciniphila* in non-responding patients with lung and kidney cancer. Accordingly, oral supplementation of the bacteria after fecal microbiota transplantation with non-responders feces in antibiotic-treated mice restored the response to PD-1 blockade^[174]. Regulation of gut microbiota composition or addition of the “right” bacteria to therapy seems therefore a very promising approach to overcome resistance, or at least significantly improve the response to ICIs.

CONCLUSION

Intrinsic and acquired resistance to chemo-, targeted, and immune-therapy remain the core problem(s) to tackle for ameliorating the outcome of CRC patients, especially in the metastatic setting. Significant improvements and longer expectancy of life have been reached using a combination/integration of the different types of therapy, but only the identification of additional targetable liabilities to be exploited in specific settings will allow to concomitantly attack the tumor from different angles, hopefully leading to its eradication. In this sense, promising approaches are: the development of novel nanoparticles able to vehicle chemotherapy directly inside the cells avoiding the intake/efflux systems, often deregulated in resistant cells; the induction of synthetic lethality via the use of inhibitors of specific DNA damage checkpoints or DNA repair enzymes in tumors presenting defects in the DNA repair mechanisms; the use of BH-3 mimetics in tumors highly expressing anti-apoptotic members of the BCL2 family; the targeting of several kinases shown to sustain resistance to classic chemotherapy and also resistance to target therapy via activation of feed-back loops; the targeting of pathways crucial for cancer stem cells maintenance and viability; the targeting of several components of the TME, recognized to be responsible for an immune-privileged environment, among which the so-called immune checkpoints; and the modulation of the microbiota. For the most of these approaches an unavoidable task will be patient stratification according to specific biomarkers and/or genetic defects, indicating that precision medicine is the ultimate path to cover in order to identify effective therapies for each patient. In addition, given the high tumoral heterogeneity and the Darwinian pressure exerted by anti-cancer treatments, to prevent and/or overcome resistance it will be also essential to combine different types of therapies and using vertical approaches to target multiple nodes along the same pathway.

DECLARATIONS

Authors' contributions

Drafting the article, revising it, and giving final approval prior to submission: Grassilli E, Cerrito MG

Availability of data and material

Not applicable.

Financial support and sponsorship

None.

Conflicts of interest

Both authors declared that there are no conflicts of interest.

Ethical approval and consent to participate

Not applicable.

Consent for publication

Not applicable.

Copyright

© The Author(s) 2022.

REFERENCES

1. Siegel RL, Miller KD, Fedewa SA, et al. Colorectal cancer statistics, 2017. *CA Cancer J Clin* 2017;67:177-93. DOI PubMed
2. Arnold M, Sierra MS, Laversanne M, Soerjomataram I, Jemal A, Bray F. Global patterns and trends in colorectal cancer incidence and mortality. *Gut* 2017;66:683-91. DOI PubMed
3. Colorectal cancer: statistics. Available from: <https://www.cancer.net/cancer-types/colorectal-cancer/statistics> [Last accessed on 23 Dec 2021].
4. Yoshino T, Arnold D, Taniguchi H, et al. Pan-Asian adapted ESMO consensus guidelines for the management of patients with metastatic colorectal cancer: a JSMO-ESMO initiative endorsed by CSCO, KACO, MOS, SSO and TOS. *Ann Oncol* 2018;29:44-70. DOI PubMed
5. Glynne-Jones R, Wyrwicz L, Tiret E, et al; ESMO Guidelines Committee. Rectal cancer: ESMO Clinical Practice Guidelines for diagnosis, treatment and follow-up. *Ann Oncol* 2018;29:iv263. DOI PubMed
6. Benson AB, Venook AP, Al-Hawary MM, et al. NCCN Guidelines insights: colon cancer, version 2.2018. *J Natl Compr Canc Netw* 2018;16:359-69. DOI PubMed
7. Hammond WA, Swaika A, Mody K. Pharmacologic resistance in colorectal cancer: a review. *Ther Adv Med Oncol* 2016;8:57-84. DOI PubMed PMC
8. Housman G, Byler S, Heerboth S, et al. Drug resistance in cancer: an overview. *Cancers (Basel)* 2014;6:1769-92. DOI PubMed PMC
9. Cerrito MG, Grassilli E. Identifying novel actionable targets in colon cancer. *Biomedicines* 2021;9:579. DOI PubMed PMC
10. Cremolini C, Schirripa M, Antoniotti C, et al. First-line chemotherapy for mCRC-a review and evidence-based algorithm. *Nat Rev Clin Oncol* 2015;12:607-19. DOI PubMed
11. Marin JJG, Macias RIR, Monte MJ, et al. Cellular mechanisms accounting for the refractoriness of colorectal carcinoma to pharmacological treatment. *Cancers (Basel)* 2020;12:2605. DOI PubMed PMC
12. Grant CE, Valdimarsson G, Hipfner DR, et al. Overexpression of multidrug resistance-associated protein (MRP) increases resistance to natural product drugs. *Cancer Res* 1994;54:357-61. PubMed
13. Cao D, Qin S, Mu Y, Zhong M. The role of MRP1 in the multidrug resistance of colorectal cancer. *Oncol Lett* 2017;13:2471-6. DOI PubMed PMC
14. Zhao J, Li W, Zhu D, et al. Association of single nucleotide polymorphisms in MTHFR and ABCG2 with the different efficacy of first-line chemotherapy in metastatic colorectal cancer. *Med Oncol* 2014;31:802. DOI PubMed PMC
15. Robey RW, Pluchino KM, Hall MD, Fojo AT, Bates SE, Gottesman MM. Revisiting the role of ABC transporters in multidrug-resistant cancer. *Nat Rev Cancer* 2018;18:452-64. DOI PubMed PMC
16. Borst P. Looking back at multidrug resistance (MDR) research and ten mistakes to be avoided when writing about ABC transporters in MDR. *FEBS Lett* 2020;594:4001-11. DOI PubMed
17. Gao Q, Li XX, Xu YM, et al. IRE1 α -targeting downregulates ABC transporters and overcomes drug resistance of colon cancer cells. *Cancer Lett* 2020;476:67-74. DOI PubMed

18. Read A, Schröder M. The unfolded protein response: an overview. *Biology (Basel)* 2021;10:384. DOI PubMed PMC
19. Park SM, Kang TI, So JS. Roles of XBP1s in transcriptional regulation of target genes. *Biomedicines* 2021;9:791. DOI PubMed PMC
20. Gu J, Dong D, Long E, et al. Upregulated OCT3 has the potential to improve the survival of colorectal cancer patients treated with (m)FOLFOX6 adjuvant chemotherapy. *Int J Colorectal Dis* 2019;34:2151-9. DOI PubMed
21. Gu J, Wang L, Li T, et al. Role and mechanism of organic cation transporter 3 in oxaliplatin treatment of colon cancer in vitro and in vivo. *Oncol Rep* 2019;42:1355-64. DOI PubMed PMC
22. Safaei R, Howell SB. Copper transporters regulate the cellular pharmacology and sensitivity to Pt drugs. *Crit Rev Oncol Hematol* 2005;53:13-23. DOI PubMed
23. Martinez-Balibrea E, Martínez-Cardús A, Musulén E, et al. Increased levels of copper efflux transporter ATP7B are associated with poor outcome in colorectal cancer patients receiving oxaliplatin-based chemotherapy. *Int J Cancer* 2009;124:2905-10. DOI PubMed
24. Sun S, Cai J, Yang Q, Zhao S, Wang Z. The association between copper transporters and the prognosis of cancer patients undergoing chemotherapy: a meta-analysis of literatures and datasets. *Oncotarget* 2017;8:16036-51. DOI PubMed PMC
25. Untereiner AA, Pavlidou A, Druzhyna N, Papapetropoulos A, Hellmich MR, Szabo C. Drug resistance induces the upregulation of H₂S-producing enzymes in HCT116 colon cancer cells. *Biochem Pharmacol* 2018;149:174-85. DOI PubMed PMC
26. Leichman CG, Lenz HJ, Leichman L, et al. Quantitation of intratumoral thymidylate synthase expression predicts for disseminated colorectal cancer response and resistance to protracted-infusion fluorouracil and weekly leucovorin. *J Clin Oncol* 1997;15:3223-9. DOI PubMed
27. Salonga D, Danenberg KD, Johnson M, et al. Colorectal tumors responding to 5-fluorouracil have low gene expression levels of dihydropyrimidine dehydrogenase, thymidylate synthase, and thymidine phosphorylase. *Clin Cancer Res* 2000;6:1322-7. PubMed
28. Santos A, Zanetta S, Cresteil T, et al. Metabolism of irinotecan (CPT-11) by CYP3A4 and CYP3A5 in humans. *Clin Cancer Res* 2000;6:2012-20. PubMed
29. Buck E, Sprick M, Gaida MM, et al. Tumor response to irinotecan is associated with CYP3A5 expression in colorectal cancer. *Oncol Lett* 2019;17:3890-8. DOI PubMed PMC
30. Zhao Z, Zhang G, Li W. Elevated expression of ERCC6 confers resistance to 5-fluorouracil and is associated with poor patient survival in colorectal cancer. *DNA Cell Biol* 2017;36:781-6. DOI PubMed
31. Leguisamo NM, Gloria HC, Kalil AN, et al. Base excision repair imbalance in colorectal cancer has prognostic value and modulates response to chemotherapy. *Oncotarget* 2017;8:54199-214. DOI PubMed PMC
32. Mishra B, Zhang S, Zhao H, et al. Discovery of a novel DNA polymerase inhibitor and characterization of its antiproliferative properties. *Cancer Biol Ther* 2019;20:474-86. DOI PubMed PMC
33. Jover R, Zapater P, Castells A, et al; Gastrointestinal Oncology Group of the Spanish Gastroenterological Association. The efficacy of adjuvant chemotherapy with 5-fluorouracil in colorectal cancer depends on the mismatch repair status. *Eur J Cancer* 2009;45:365-73. DOI PubMed
34. Sargent DJ, Marsoni S, Monges G, et al. Defective mismatch repair as a predictive marker for lack of efficacy of fluorouracil-based adjuvant therapy in colon cancer. *J Clin Oncol* 2010;28:3219-26. DOI PubMed PMC
35. Alex AK, Siqueira S, Coudry R, et al. Response to chemotherapy and prognosis in metastatic colorectal cancer with DNA deficient mismatch repair. *Clin Colorectal Cancer* 2017;16:228-39. DOI PubMed
36. Oliveira AF, Bretes L, Furtado I. Review of PD-1/PD-L1 inhibitors in metastatic dMMR/MSI-H colorectal cancer. *Front Oncol* 2019;9:396. DOI PubMed PMC
37. Hafner A, Bulyk ML, Jambhekar A, Lahav G. The multiple mechanisms that regulate p53 activity and cell fate. *Nat Rev Mol Cell Biol* 2019;20:199-210. DOI PubMed
38. Carethers JM, Jung BH. Genetics and genetic biomarkers in sporadic colorectal cancer. *Gastroenterology* 2015;149:1177-90.e3. DOI PubMed PMC
39. Kandioler D, Mittlböck M, Kappel S, et al; p53 Research Group and the Austrian Breast and Colorectal Study Group (ABCSG). TP53 mutational status and prediction of benefit from adjuvant 5-fluorouracil in stage III colon cancer patients. *EBioMedicine* 2015;2:825-30. DOI PubMed PMC
40. Pilat N, Grünberger T, Längle F, et al. Assessing the TP53 marker type in patients treated with or without neoadjuvant chemotherapy for resectable colorectal liver metastases: a p53 Research Group study. *Eur J Surg Oncol* 2015;41:683-9. DOI PubMed
41. Grassilli E, Narloch R, Federzoni E, et al. A kinase-directed RNAi screen identifies GSK-3b/a as a target to overcome drug resistance of p53-null colon cancer cells. *Clin Cancer Res* 2010;16 supplement:A5. DOI
42. Panchal NK, Sabina EP. A serine/threonine protein PIM kinase as a biomarker of cancer and a target for anti-tumor therapy. *Life Sci* 2020;255:117866. DOI PubMed
43. Ferreira BI, Santos B, Link W, De Sousa-Coelho AL. Tribbles pseudokinases in colorectal cancer. *Cancers (Basel)* 2021;13:2825. DOI PubMed PMC
44. Xiao T, Xiao Y, Wang W, Tang YY, Xiao Z, Su M. Targeting EphA2 in cancer. *J Hematol Oncol* 2020;13:114. DOI PubMed PMC
45. Buckens OJ, El Hassouni B, Giovannetti E, Peters GJ. The role of Eph receptors in cancer and how to target them: novel approaches in cancer treatment. *Expert Opin Investig Drugs* 2020;29:567-82. DOI PubMed
46. Reilly NM, Novara L, Di Nicolantonio F, Bardelli A. Exploiting DNA repair defects in colorectal cancer. *Mol Oncol* 2019;13:681-700. DOI PubMed PMC
47. Fathi Maroufi N, Rashidi MR, Vahedian V, Akbarzadeh M, Fattahi A, Nouri M. Therapeutic potentials of Apatinib in cancer treatment: possible mechanisms and clinical relevance. *Life Sci* 2020;241:117106. DOI PubMed

48. Grassilli E, Narloch R, Federzoni E, et al. Inhibition of GSK3B bypass drug resistance of p53-null colon carcinomas by enabling necroptosis in response to chemotherapy. *Clin Cancer Res* 2013;19:3820-31. DOI PubMed
49. Grassilli E, Ianzano L, Bonomo S, et al. GSK3A is redundant with GSK3B in modulating drug resistance and chemotherapy-induced necroptosis. *PLoS One* 2014;9:e100947. DOI PubMed PMC
50. Grassilli E, Pisano F, Cialdella A, et al. A novel oncogenic BTK isoform is overexpressed in colon cancers and required for RAS-mediated transformation. *Oncogene* 2016;35:4368-78. DOI PubMed PMC
51. Lavitrano M, Ianzano L, Bonomo S, et al. BTK inhibitors synergise with 5-FU to treat drug-resistant TP53-null colon cancers. *J Pathol* 2020;250:134-47. DOI PubMed
52. Sala L, Cirillo G, Riva G, et al. Specific expression of a new bruton tyrosine kinase isoform (p65BTK) in the glioblastoma gemistocytic histotype. *Front Mol Neurosci* 2019;12:2. DOI PubMed PMC
53. Grassilli E, Cerrito MG, Bonomo S, Giovannoni R, Conconi D, Lavitrano M. p65BTK is a novel biomarker and therapeutic target in solid tumors. *Front Cell Dev Biol* 2021;9:690365. DOI PubMed PMC
54. Giordano F, Vaira V, Cortinovis D, et al. p65BTK is a novel potential actionable target in KRAS-mutated/EGFR-wild type lung adenocarcinoma. *J Exp Clin Cancer Res* 2019;38:260. DOI PubMed PMC
55. Zhang L, Yu J, Park BH, Kinzler KW, Vogelstein B. Role of BAX in the apoptotic response to anticancer agents. *Science* 2000;290:989-92. DOI PubMed
56. Manoochehri M, Karbasi A, Bandehpour M, Kazemi B. Down-regulation of BAX gene during carcinogenesis and acquisition of resistance to 5-FU in colorectal cancer. *Pathol Oncol Res* 2014;20:301-7. DOI PubMed
57. Rampino N, Yamamoto H, Ionov Y, et al. Somatic frameshift mutations in the BAX gene in colon cancers of the microsatellite mutator phenotype. *Science* 1997;275:967-9. DOI PubMed
58. Wang W, Guo W, Li L, et al. Andrographolide reversed 5-FU resistance in human colorectal cancer by elevating BAX expression. *Biochem Pharmacol* 2016;121:8-17. DOI PubMed
59. Ramesh P, Medema JP. BCL-2 family deregulation in colorectal cancer: potential for BH3 mimetics in therapy. *Apoptosis* 2020;25:305-20. DOI PubMed PMC
60. Raats DA, de Bruijn MT, Steller EJ, Emmink BL, Borel-Rinkes IH, Kranenburg O. Synergistic killing of colorectal cancer cells by oxaliplatin and ABT-737. *Cell Oncol (Dordr)* 2011;34:307-13. DOI PubMed
61. Wang X, Zhang C, Yan X, et al. A novel bioavailable BH3 mimetic efficiently inhibits colon cancer via cascade effects of mitochondria. *Clin Cancer Res* 2016;22:1445-58. DOI PubMed
62. Ritter V, Krautter F, Klein D, Jendrossek V, Rudner J. Bcl-2/Bcl-xL inhibitor ABT-263 overcomes hypoxia-driven radioresistance and improves radiotherapy. *Cell Death Dis* 2021;12:694. DOI PubMed PMC
63. Kim YS, Lee HJ, Park JM, et al. Targeted molecular ablation of cancer stem cells for curing gastrointestinal cancers. *Expert Rev Gastroenterol Hepatol* 2017;11:1059-70. DOI PubMed
64. Battle E, Clevers H. Cancer stem cells revisited. *Nat Med* 2017;23:1124-34. DOI PubMed
65. Vallette FM, Olivier C, Lézot F, et al. Dormant, quiescent, tolerant and persister cells: Four synonyms for the same target in cancer. *Biochem Pharmacol* 2019;162:169-76. DOI PubMed
66. Oren Y, Tsabar M, Cuoco MS, et al. Cycling cancer persister cells arise from lineages with distinct programs. *Nature* 2021;596:576-82. DOI PubMed
67. Lenos KJ, Miedema DM, Lodestijn SC, et al. Stem cell functionality is microenvironmentally defined during tumour expansion and therapy response in colon cancer. *Nat Cell Biol* 2018;20:1193-202. DOI PubMed PMC
68. Cho YH, Ro EJ, Yoon JS, et al. 5-FU promotes stemness of colorectal cancer via p53-mediated WNT/ β -catenin pathway activation. *Nat Commun* 2020;11:5321. DOI PubMed PMC
69. Lin CC, Liao TT, Yang MH. Immune adaptation of colorectal cancer stem cells and their interaction with the tumor microenvironment. *Front Oncol* 2020;10:588542. DOI PubMed PMC
70. Tang YA, Chen YF, Bao Y, et al. Hypoxic tumor microenvironment activates GLI2 via HIF-1 α and TGF- β 2 to promote chemoresistance in colorectal cancer. *Proc Natl Acad Sci U S A* 2018;115:E5990-9. DOI PubMed PMC
71. Romano G, Santi L, Bianco MR, et al. The TGF- β pathway is activated by 5-fluorouracil treatment in drug resistant colorectal carcinoma cells. *Oncotarget* 2016;7:22077-91. DOI PubMed PMC
72. Hu JL, Wang W, Lan XL, et al. CAFs secreted exosomes promote metastasis and chemotherapy resistance by enhancing cell stemness and epithelial-mesenchymal transition in colorectal cancer. *Mol Cancer* 2019;18:91. DOI PubMed PMC
73. Ren J, Ding L, Zhang D, et al. Carcinoma-associated fibroblasts promote the stemness and chemoresistance of colorectal cancer by transferring exosomal lncRNA H19. *Theranostics* 2018;8:3932-48. DOI PubMed PMC
74. Sun LH, Tian D, Yang ZC, Li JL. Exosomal miR-21 promotes proliferation, invasion and therapy resistance of colon adenocarcinoma cells through its target PDCD4. *Sci Rep* 2020;10:8271. DOI PubMed PMC
75. Zheng X, Ma N, Wang X, et al. Exosomes derived from 5-fluorouracil-resistant colon cancer cells are enriched in GDF15 and can promote angiogenesis. *J Cancer* 2020;11:7116-26. DOI PubMed PMC
76. Zheng X, Liu J, Li X, et al. Angiogenesis is promoted by exosomal DPP4 derived from 5-fluorouracil-resistant colon cancer cells. *Cancer Lett* 2021;497:190-201. DOI PubMed
77. Galdiero MR, Bonavita E, Barajon I, Garlanda C, Mantovani A, Jaillon S. Tumor associated macrophages and neutrophils in cancer. *Immunobiology* 2013;218:1402-10. DOI PubMed
78. Tolba MF. Revolutionizing the landscape of colorectal cancer treatment: the potential role of immune checkpoint inhibitors. *Int J Cancer* 2020;147:2996-3006. DOI PubMed

79. Yu T, Guo F, Yu Y, et al. Fusobacterium nucleatum promotes chemoresistance to colorectal cancer by modulating autophagy. *Cell* 2017;170:548-63.e16. DOI PubMed PMC
80. Zhang S, Yang Y, Weng W, et al. Fusobacterium nucleatum promotes chemoresistance to 5-fluorouracil by upregulation of BIRC3 expression in colorectal cancer. *J Exp Clin Cancer Res* 2019;38:14. DOI PubMed PMC
81. Chen Y, Peng Y, Yu J, et al. Invasive Fusobacterium nucleatum activates beta-catenin signaling in colorectal cancer via a TLR4/P-PAK1 cascade. *Oncotarget* 2017;8:31802-14. DOI PubMed PMC
82. Geller LT, Barzily-Rokni M, Danino T, et al. Potential role of intratumor bacteria in mediating tumor resistance to the chemotherapeutic drug gemcitabine. *Science* 2017;357:1156-60. DOI PubMed PMC
83. Iida N, Dzutsev A, Stewart CA, et al. Commensal bacteria control cancer response to therapy by modulating the tumor microenvironment. *Science* 2013;342:967-70. DOI PubMed PMC
84. Ooki A, Shinozaki E, Yamaguchi K. Immunotherapy in colorectal cancer: current and future strategies. *J Anus Rectum Colon* 2021;5:11-24. DOI PubMed PMC
85. Rankin A, Klempner SJ, Erlich R, et al. Broad detection of alterations predicted to confer lack of benefit from EGFR antibodies or sensitivity to targeted therapy in advanced colorectal cancer. *Oncologist* 2016;21:1306-14. DOI PubMed PMC
86. Raskov H, Søby JH, Troelsen J, Bojesen RD, Gögenur I. Driver gene mutations and epigenetics in colorectal cancer. *Ann Surg* 2020;271:75-85. DOI PubMed
87. Misale S, Di Nicolantonio F, Sartore-Bianchi A, Siena S, Bardelli A. Resistance to anti-EGFR therapy in colorectal cancer: from heterogeneity to convergent evolution. *Cancer Discov* 2014;4:1269-80. DOI PubMed
88. Bardelli A, Corso S, Bertotti A, et al. Amplification of the MET receptor drives resistance to anti-EGFR therapies in colorectal cancer. *Cancer Discov* 2013;3:658-73. DOI PubMed PMC
89. Troiani T, Martinelli E, Napolitano S, et al. Increased TGF- α as a mechanism of acquired resistance to the anti-EGFR inhibitor cetuximab through EGFR-MET interaction and activation of MET signaling in colon cancer cells. *Clin Cancer Res* 2013;19:6751-65. DOI PubMed
90. Song N, Liu S, Zhang J, et al. Cetuximab-induced MET activation acts as a novel resistance mechanism in colon cancer cells. *Int J Mol Sci* 2014;15:5838-51. DOI PubMed PMC
91. Song N, Qu X, Liu S, et al. Dual inhibition of MET and SRC kinase activity as a combined targeting strategy for colon cancer. *Exp Ther Med* 2017;14:1357-66. DOI PubMed PMC
92. Jia Y, Dai G, Wang J, et al. c-MET inhibition enhances the response of the colorectal cancer cells to irradiation in vitro and in vivo. *Oncol Lett* 2016;11:2879-85. DOI PubMed PMC
93. Rimassa L, Bozzarelli S, Pietrantonio F, et al. Phase II study of tivantinib and cetuximab in patients with KRAS wild-type metastatic colorectal cancer with acquired resistance to EGFR inhibitors and emergence of MET overexpression: lesson learned for future trials with EGFR/MET dual inhibition. *Clin Colorectal Cancer* 2019;18:125-32.e2. DOI PubMed
94. Eng C, Bessudo A, Hart LL, et al. A randomized, placebo-controlled, phase 1/2 study of tivantinib (ARQ 197) in combination with irinotecan and cetuximab in patients with metastatic colorectal cancer with wild-type KRAS who have received first-line systemic therapy. *Int J Cancer* 2016;139:177-86. DOI PubMed PMC
95. Craig SG, Mende S, Humphries MP, et al. Orthogonal MET analysis in a population-representative stage II-III colon cancer cohort: prognostic and potential therapeutic implications. *Mol Oncol* 2021;15:3317-28. DOI PubMed PMC
96. Cancer Genome Atlas Network. Comprehensive molecular characterization of human colon and rectal cancer. *Nature* 2012;48:330-7. DOI
97. Bertotti A, Migliardi G, Galimi F, et al. A molecularly annotated platform of patient-derived xenografts ("xenopatients") identifies HER2 as an effective therapeutic target in cetuximab-resistant colorectal cancer. *Cancer Discov* 2011;1:508-23. DOI PubMed
98. Kavuri SM, Jain N, Galimi F, et al. HER2 activating mutations are targets for colorectal cancer treatment. *Cancer Discov* 2015;5:832-41. DOI PubMed PMC
99. Cremolini C, Morano F, Moretto R, et al. Negative hyper-selection of metastatic colorectal cancer patients for anti-EGFR monoclonal antibodies: the PRESSING case-control study. *Ann Oncol* 2017;28:3009-14. DOI PubMed
100. Bregni G, Sciallero S, Sobrero A. HER2 amplification and Anti-EGFR sensitivity in advanced colorectal cancer. *JAMA Oncol* 2019;5:605-6. DOI PubMed
101. Yonesaka K, Zejnullahu K, Okamoto I, et al. Activation of ERBB2 signaling causes resistance to the EGFR-directed therapeutic antibody cetuximab. *Sci Transl Med* 2011;3:99ra86. DOI PubMed PMC
102. Mohan S, Heitzer E, Ulz P, et al. Changes in colorectal carcinoma genomes under anti-EGFR therapy identified by whole-genome plasma DNA sequencing. *PLoS Genet* 2014;10:e1004271. DOI PubMed PMC
103. Sartore-Bianchi A, Trusolino L, Martino C, et al. Dual-targeted therapy with trastuzumab and lapatinib in treatment-refractory, KRAS codon 12/13 wild-type, HER2-positive metastatic colorectal cancer (HERACLES): a proof-of-concept, multicentre, open-label, phase 2 trial. *Lancet Oncol* 2016;17:738-46. DOI PubMed
104. Hainsworth JD, Meric-Bernstam F, Swanton C, et al. Targeted therapy for advanced solid tumors on the basis of molecular profiles: results from MyPathway, an open-label, phase IIa multiple basket study. *J Clin Oncol* 2018;36:536-42. DOI PubMed
105. Nakamura Y, Okamoto W, Kato T, et al. TRIUMPH: primary efficacy of a phase II trial of trastuzumab (t) and pertuzumab (p) in patients (pts) with metastatic colorectal cancer (mCRC) with HER2 (ERBB2) amplification (amp) in tumor tissue circulating tumor DNA (ctDNA): a GOZILA sub-study. *Ann Oncol* 2019;30:v199-200. DOI
106. Strickler J, Zemla T, Ou F, et al. Trastuzumab and tucatinib for the treatment of HER2 amplified metastatic colorectal cancer (mCRC): initial results from the MOUNTAINEER trial. *Ann Oncol* 2019;30:v200. DOI

107. Mauri G, Arena S, Siena S, Bardelli A, Sartore-Bianchi A. The DNA damage response pathway as a land of therapeutic opportunities for colorectal cancer. *Ann Oncol* 2020;31:1135-47. [DOI](#) [PubMed](#)
108. Guarini C, Grassi T, Pezzicoli G, Porta C. Beyond RAS and BRAF: HER2, a new actionable oncotarget in advanced colorectal cancer. *Int J Mol Sci* 2021;22:6813. [DOI](#) [PubMed](#) [PMC](#)
109. Mangiapane LR, Nicotra A, Turdo A, et al. PI3K-driven HER2 expression is a potential therapeutic target in colorectal cancer stem cells. *Gut* 2022;71:119-28. [DOI](#) [PubMed](#)
110. Pietrantonio F, Vernieri C, Siravegna G, et al. Heterogeneity of acquired resistance to anti-EGFR monoclonal antibodies in patients with metastatic colorectal cancer. *Clin Cancer Res* 2017;23:2414-22. [DOI](#) [PubMed](#)
111. Baselga J. The EGFR as a target for anticancer therapy - focus on cetuximab. *Eur J Cancer* 2001;37:16-22. [DOI](#) [PubMed](#)
112. Vitiello PP, Cardone C, Martini G, et al. Receptor tyrosine kinase-dependent PI3K activation is an escape mechanism to vertical suppression of the EGFR/RAS/MAPK pathway in KRAS-mutated human colorectal cancer cell lines. *J Exp Clin Cancer Res* 2019;38:41. [DOI](#) [PubMed](#) [PMC](#)
113. Hasbal-Celikok G, Aksoy-Sagirli P, Altiparmak-Ulbegi G, Can A. Identification of AKT1/ β -catenin mutations conferring cetuximab and chemotherapeutic drug resistance in colorectal cancer treatment. *Oncol Lett* 2021;21:209. [DOI](#) [PubMed](#) [PMC](#)
114. Martini G, Cardone C, Vitiello PP, et al. EPHA2 is a predictive biomarker of resistance and a potential therapeutic target for improving antiepidermal growth factor receptor therapy in colorectal cancer. *Mol Cancer Ther* 2019;18:845-55. [DOI](#) [PubMed](#)
115. Kopetz S, Desai J, Chan E, et al. PLX4032 in metastatic colorectal cancer patients with mutant BRAF tumors. *J Clin Oncol* 2010;28:3534-3534. [DOI](#)
116. Hyman DM, Puzanov I, Subbiah V, et al. Vemurafenib in multiple nonmelanoma cancers with BRAF V600 mutations. *N Engl J Med* 2015;373:726-36. [DOI](#) [PubMed](#) [PMC](#)
117. Kopetz S, Desai J, Chan E, et al. Phase II pilot study of vemurafenib in patients with metastatic BRAF-mutated colorectal cancer. *J Clin Oncol* 2015;33:4032-8. [DOI](#) [PubMed](#) [PMC](#)
118. Prahallad A, Sun C, Huang S, et al. Unresponsiveness of colon cancer to BRAF(V600E) inhibition through feedback activation of EGFR. *Nature* 2012;483:100-3. [DOI](#) [PubMed](#)
119. Corcoran RB, Ebi H, Turke AB, et al. EGFR-mediated re-activation of MAPK signaling contributes to insensitivity of BRAF mutant colorectal cancers to RAF inhibition with vemurafenib. *Cancer Discov* 2012;2:227-35. [DOI](#) [PubMed](#) [PMC](#)
120. Yao Z, Gao Y, Su W, et al. RAF inhibitor PLX8394 selectively disrupts BRAF dimers and RAS-independent BRAF-mutant-driven signaling. *Nat Med* 2019;25:284-91. [DOI](#) [PubMed](#) [PMC](#)
121. Kawakami H, Huang S, Pal K, Dutta SK, Mukhopadhyay D, Sinicrope FA. Mutant BRAF upregulates MCL-1 to confer apoptosis resistance that is reversed by MCL-1 antagonism and cobimetinib in colorectal cancer. *Mol Cancer Ther* 2016;15:3015-27. [DOI](#) [PubMed](#) [PMC](#)
122. Chen G, Gao C, Gao X, et al. Wnt/ β -catenin pathway activation mediates adaptive resistance to BRAF inhibition in colorectal cancer. *Mol Cancer Ther* 2018;17:806-13. [DOI](#) [PubMed](#) [PMC](#)
123. Grbčić P, Fučkar Čupić D, Gamberi T, Kraljević Pavelić S, Sedić M. Proteomic profiling of BRAFV600E mutant colon cancer cells reveals the involvement of nucleophosmin/c-Myc axis in modulating the response and resistance to BRAF inhibition by vemurafenib. *Int J Mol Sci* 2021;22:6174. [DOI](#) [PubMed](#) [PMC](#)
124. Yang H, Higgins B, Kolinsky K, et al. Antitumor activity of BRAF inhibitor vemurafenib in preclinical models of BRAF-mutant colorectal cancer. *Cancer Res* 2012;72:779-89. [DOI](#) [PubMed](#)
125. Atreya CE, Van Cutsem E, Bendell JC, et al. Updated efficacy of the MEK inhibitor trametinib (T), BRAF inhibitor dabrafenib (D), and anti-EGFR antibody panitumumab (P) in patients (pts) with BRAF V600E mutated (BRAFM) metastatic colorectal cancer (mCRC). *J Clin Oncol* 2015;33:103. [DOI](#)
126. Tabernero J, Geel RV, Guren TK, et al. Phase 2 results: encorafenib (ENCO) and cetuximab (CETUX) with or without alpelisib (ALP) in patients with advanced BRAF-mutant colorectal cancer (BRAFM CRC). *J Clin Oncol* ;34:3544. [DOI](#)
127. Yaeger R, Cercek A, O'Reilly EM, et al. Pilot trial of combined BRAF and EGFR inhibition in BRAF mutant metastatic colorectal cancer patients. *Clin Cancer Res* 2015;21:1313-20. [DOI](#) [PubMed](#) [PMC](#)
128. Yaeger R, Yao Z, Hyman DM, et al. Mechanisms of acquired resistance to BRAF V600E inhibition in colon cancers converge on RAF dimerization and are sensitive to its inhibition. *Cancer Res* 2017;77:6513-23. [DOI](#) [PubMed](#) [PMC](#)
129. Long GV, Stroyakovskiy D, Gogas H, et al. Combined BRAF and MEK inhibition versus BRAF inhibition alone in melanoma. *N Engl J Med* 2014;371:1877-88. [DOI](#) [PubMed](#)
130. Robert C, Karaszewska B, Schachter J, et al. Improved overall survival in melanoma with combined dabrafenib and trametinib. *N Engl J Med* 2015;372:30-9. [DOI](#) [PubMed](#)
131. Halle BR, Johnson DB. Defining and targeting BRAF mutations in solid tumors. *Curr Treat Options Oncol* 2021;22:30. [DOI](#) [PubMed](#)
132. Tan J, Liu R, Zhu G, Umbricht CB, Xing M. TERT promoter mutation determines apoptotic and therapeutic responses of BRAF-mutant cancers to BRAF and MEK inhibitors: achilles heel. *Proc Natl Acad Sci U S A* 2020;117:15846-51. [DOI](#) [PubMed](#) [PMC](#)
133. Kopetz S, Grothey A, Yaeger R, et al. Encorafenib, binimetinib, and cetuximab in BRAF V600E-mutated colorectal cancer. *N Engl J Med* 2019;381:1632-43. [DOI](#) [PubMed](#)
134. Kopetz S, Guthrie KA, Morris VK, et al. Randomized trial of irinotecan and cetuximab with or without vemurafenib in BRAF-mutant metastatic colorectal cancer (SWOG S1406). *J Clin Oncol* 2021;39:285-94. [DOI](#) [PubMed](#) [PMC](#)
135. Van Cutsem E, Huijberts S, Grothey A, et al. Binimetinib, encorafenib, and cetuximab triplet therapy for patients with BRAF V600E-mutant metastatic colorectal cancer: safety lead-in results from the phase III BEACON colorectal cancer study. *J Clin Oncol*

- 2019;37:1460-9. DOI PubMed PMC
136. Tabernero J, Grothey A, Van Cutsem E, et al. Encorafenib plus cetuximab as a new standard of care for previously treated BRAF V600E-mutant metastatic colorectal cancer: updated survival results and subgroup analyses from the BEACON study. *J Clin Oncol* 2021;39:273-84. DOI PubMed PMC
137. Eng C. BRAF mutation in colorectal cancer: an enigmatic target. *J Clin Oncol* 2021;39:259-61. DOI PubMed
138. Lapeyre-prost A, Terme M, Pernot S, et al. Immunomodulatory activity of VEGF in cancer. *Int Rev Cell Mol Biol* 2017;330:295-342. DOI PubMed
139. Grassi E, Corbelli J, Papiani G, Barbera MA, Gazzaneo F, Tamperi S. Current therapeutic strategies in BRAF-mutant metastatic colorectal cancer. *Front Oncol* 2021;11:601722. DOI PubMed PMC
140. Rosen LS, Jacobs IA, Burkes RL. Bevacizumab in colorectal cancer: current role in treatment and the potential of biosimilars. *Target Oncol* 2017;12:599-610. DOI PubMed PMC
141. Torben Frøstrup H, Qvortrup C, Pfeiffer P. Angiogenesis inhibitors for colorectal cancer. A review of the clinical data. *Cancers* 2021;13:1031. DOI
142. de Gramont A, Van Cutsem E, Schmoll H, et al. Bevacizumab plus oxaliplatin-based chemotherapy as adjuvant treatment for colon cancer (AVANT): a phase 3 randomised controlled trial. *Lancet Oncol* 2012;13:1225-33. DOI PubMed
143. Belotti D, Pinessi D, Tarabozetti G. Alternative vascularization mechanisms in tumor resistance to therapy. *Cancers* 2021;13:1912. DOI PubMed PMC
144. Knopik-skrocka A, Kręplewska P, Jarmołowska-jurczyszyn D. Tumor blood vessels and vasculogenic mimicry - current knowledge and searching for new cellular/molecular targets of anti-angiogenic therapy. *Adv Cell Biol* 2017;5:50-71. DOI
145. Lai E, Cascinu S, Scartozzi M. Are all anti-angiogenic drugs the same in the treatment of second-line metastatic colorectal cancer? *Front Oncol* 2021;11:637823. DOI PubMed PMC
146. Hecht JR, Cohn A, Dakhil S, et al. SPIRITT: a randomized, multicenter, phase II Study of panitumumab with FOLFIRI and bevacizumab with FOLFIRI as second-line treatment in patients with unresectable wild type KRAS metastatic colorectal cancer. *Clin Colorectal Cancer* 2015;14:72-80. DOI PubMed
147. Hu-Lowe DD, Chen E, Zhang L, et al. Targeting activin receptor-like kinase 1 inhibits angiogenesis and tumorigenesis through a mechanism of action complementary to anti-VEGF therapies. *Cancer Res* 2011;71:1362. DOI PubMed PMC
148. Ciardiello D, Elez E, Tabernero J, Seoane J. Clinical development of therapies targeting TGFβ: current knowledge and future perspectives. *Ann Oncol* 2020;31:1336-49. DOI PubMed
149. Hanahan D. Signaling vascular morphogenesis and maintenance. *Science* 1997;277:48-50. DOI PubMed
150. Goede V, Coutelle O, Neuneier J, et al. Identification of serum angiopoietin-2 as a biomarker for clinical outcome of colorectal cancer patients treated with bevacizumab-containing therapy. *Br J Cancer* 2010;103:1407-14. DOI PubMed PMC
151. Rigamonti N, Kadioglu E, Keklikoglou I, Wyser Rmili C, Leow CC, De Palma M. Role of angiopoietin-2 in adaptive tumor resistance to VEGF signaling blockade. *Cell Rep* 2014;8:696-706. DOI PubMed
152. Kienast Y, Klein C, Scheuer W, et al. Ang-2-VEGF-A crossMab, a novel bispecific human IgG1 antibody blocking VEGF-A and Ang-2 functions simultaneously, mediates potent antitumor, antiangiogenic, and antimetastatic efficacy. *Clin Cancer Res* 2013;19:6730-40. DOI PubMed
153. Park JS, Kim IK, Han S, et al. Normalization of tumor vessels by Tie2 activation and Ang2 inhibition enhances drug delivery and produces a favorable tumor microenvironment. *Cancer Cell* 2016;30:953-67. DOI PubMed
154. Krzystek-Korpacka M, Diakowska D, Kapturkiewicz B, Bębenek M, Gamian A. Profiles of circulating inflammatory cytokines in colorectal cancer (CRC), high cancer risk conditions, and health are distinct. Possible implications for CRC screening and surveillance. *Cancer Lett* 2013;337:107-14. DOI PubMed
155. Łukaszewicz-Zajac M, Mroczko B. Circulating biomarkers of colorectal cancer (CRC)-their utility in diagnosis and prognosis. *J Clin Med* 2021;10:2391. DOI PubMed PMC
156. Cazzaniga ME, Cordani N, Capici S, Cogliati V, Riva F, Cerrito MG. Metronomic chemotherapy. *Cancers (Basel)* 2021;13:2236. DOI PubMed PMC
157. Simkens LHJ, van Tinteren H, May A, et al. Maintenance treatment with capecitabine and bevacizumab in metastatic colorectal cancer (CAIRO3): a phase 3 randomised controlled trial of the Dutch Colorectal Cancer Group. *Lancet* 2015;385:1843-52. DOI PubMed
158. Llosa NJ, Cruise M, Tam A, et al. The vigorous immune microenvironment of microsatellite instable colon cancer is balanced by multiple counter-inhibitory checkpoints. *Cancer Discov* 2015;5:43-51. DOI PubMed PMC
159. Giannakis M, Mu XJ, Shukla SA, et al. Genomic correlates of immune-cell infiltrates in colorectal carcinoma. *Cell Rep* 2016;15:857-65. DOI PubMed PMC
160. Overman MJ, McDermott R, Leach JL, et al. Nivolumab in patients with metastatic DNA mismatch repair-deficient or microsatellite instability-high colorectal cancer (CheckMate 142): an open-label, multicentre, phase 2 study. *Lancet oncol* 2017;18:1182-91. DOI PubMed PMC
161. André T, Shi U KK, Kim TW, et al; KEYNOTE-177 Investigators. Pembrolizumab in microsatellite-instability-high advanced colorectal cancer. *N Engl J Med* 2020;383:2207-18. DOI PubMed
162. LAG3-PD-1 combo impresses in melanoma. *Cancer Discov* 2021;11:1605-6. DOI PubMed
163. Yu X, Huang X, Chen X, et al. Characterization of a novel anti-human lymphocyte activation gene 3 (LAG-3) antibody for cancer immunotherapy. *MAbs* 2019;11:1139-48. DOI PubMed PMC
164. Tang K, Wu YH, Song Y, Yu B. Indoleamine 2,3-dioxygenase 1 (IDO1) inhibitors in clinical trials for cancer immunotherapy. *J*

- Hematol Oncol* 2021;14:68. DOI PubMed PMC
165. Le Naour J, Galluzzi L, Zitvogel L, Kroemer G, Vacchelli E. Trial watch: IDO inhibitors in cancer therapy. *Oncoimmunology* 2020;9:1777625. DOI PubMed PMC
166. Prendergast GC, Malachowski WJ, Mondal A, Scherle P, Muller AJ. Indoleamine 2,3-dioxygenase and its therapeutic inhibition in cancer. *Int Rev Cell Mol Biol* 2018;336:175-203. DOI PubMed PMC
167. Voron T, Marcheteau E, Pernet S, et al. Control of the immune response by pro-angiogenic factors. *Front Oncol* 2014;4:70. DOI PubMed PMC
168. Wang Q, Gao J, Di W, et al. Anti-angiogenesis therapy overcomes the innate resistance to PD-1/PD-L1 blockade in VEGFA-overexpressed mouse tumor models. *Cancer Immunol Immunother* 2020;69:1781-99. DOI PubMed
169. Anfossi S, Calin GA. Gut microbiota: a new player in regulating immune- and chemo-therapy efficacy. *Cancer Drug Resist* 2020;3:356-70. DOI PubMed PMC
170. Vétizou M, Pitt JM, Daillère R, et al. Anticancer immunotherapy by CTLA-4 blockade relies on the gut microbiota. *Science* 2015;350:1079-84. DOI PubMed PMC
171. Sivan A, Corrales L, Hubert N, et al. Commensal Bifidobacterium promotes antitumor immunity and facilitates anti-PD-L1 efficacy. *Science* 2015;350:1084-9. DOI PubMed PMC
172. Gopalakrishnan V, Spencer CN, Nezi L, et al. Gut microbiome modulates response to anti-PD-1 immunotherapy in melanoma patients. *Science* 2018;359:97-103. DOI PubMed PMC
173. Matson V, Fessler J, Bao R, et al. The commensal microbiome is associated with anti-PD-1 efficacy in metastatic melanoma patients. *Science* 2018;359:104-8. DOI PubMed PMC
174. Routy B, Le Chatelier E, Derosa L, et al. Gut microbiome influences efficacy of PD-1-based immunotherapy against epithelial tumors. *Science* 2018;359:91-7. DOI PubMed