



Review

Open Access



# The evolving landscape of renal surgery for complex renal masses (CRM): implications for oncologic and functional outcomes

Savio Domenico Pandolfo<sup>1,2</sup> , Achille Aveta<sup>3</sup>, Sisto Perdonà<sup>3</sup>, Gianluca Spena<sup>3</sup>, Alessandro Izzo<sup>3</sup>, Antonio Tufano<sup>3</sup>, Zhenjie Wu<sup>4</sup>, Clara Cerrato<sup>5</sup>, Ferdinando Fusco<sup>6</sup>, Celeste Manfredi<sup>6</sup>, Davide Arcaniolo<sup>6</sup>, Pierluigi Russo<sup>7</sup>, Lorenzo Romano<sup>6</sup>, Matteo Ferro<sup>8</sup>, Rocco Bernardo<sup>9</sup>, Giuseppe Lucarelli<sup>10</sup>, Francesco Lasorsa<sup>10</sup>, Salvatore Siracusano<sup>1</sup>, Simone Cilio<sup>11</sup> , Carlo Giulioni<sup>12</sup>, Angelo Cafarelli<sup>12</sup>, Fabio Crocerossa<sup>13</sup>, Paolo Conforti<sup>2</sup>

<sup>1</sup>Department of Urology, University of L'Aquila, L'Aquila 67100, Italy.

<sup>2</sup>Department of Neurosciences and Reproductive Sciences and Odontostomatology, University of Naples "Federico II", Naples 80131, Italy.

<sup>3</sup>Department of Urology, Istituto Nazionale Tumori, IRCCS, "Fondazione G. Pascale", Naples 80131, Italy.

<sup>4</sup>Department of Urology, Changhai Hospital, Naval Medical University, Shanghai 200433, China.

<sup>5</sup>Urology Unit, University Hospital Southampton NHS Trust, Southampton SO16 6YD, UK.

<sup>6</sup>Unit of Urology, Department of Woman, Child and General and Specialized Surgery, University of Campania "Luigi Vanvitelli", Naples 80131, Italy.

<sup>7</sup>Department of Urology, Fondazione Policlinico Universitario Agostino Gemelli, IRCCS, Rome 00168, Italy.

<sup>8</sup>Unit of Urology, Department of Health Science, University of Milan, ASST Santi Paolo and Carlo, Milan 20142, Italy.

<sup>9</sup>Department of Urology, Fondazione Policlinico Universitario Agostino Gemelli IRCCS, Rome 00168, Italy.

<sup>10</sup>Department of Precision and Regenerative Medicine and Ionian Area Urology, Andrology and Kidney Transplantation Unit, Aldo Moro University of Bari, Bari 70124, Italy.

<sup>11</sup>Department of Medicine and Surgery, Scuola Medica Salernitana, University of Salerno, Fisciano 84081, Italy.

<sup>12</sup>Urology Unit, Casa di Cura Villa Igea, Ancona 60127, Italy.

<sup>13</sup>Department of Urology, Magna Graecia University of Catanzaro, Catanzaro 88100, Italy.

**Correspondence to:** Dr. Savio Domenico Pandolfo, Department of Urology, University of L'Aquila, Palazzo Camponeschi, piazza Santa Margherita 2, L'Aquila 67100, Italy. E-mail: pandolfosavio@gmail.com

**How to cite this article:** Pandolfo SD, Aveta A, Perdonà S, Spena G, Izzo A, Tufano A, Wu Z, Cerrato C, Fusco F, Manfredi C, Arcaniolo D, Russo P, Romano L, Ferro M, Bernardo R, Lucarelli G, Lasorsa F, Siracusano S, Cilio S, Giulioni C, Cafarelli A, Crocerossa F, Conforti P. The evolving landscape of renal surgery for complex renal masses (CRM): implications for oncologic and functional outcomes. *Mini-invasive Surg.* 2025;9:1. <https://dx.doi.org/10.20517/2574-1225.2024.83>

**Received:** 27 Oct 2024 **First Decision:** 11 Dec 2024 **Revised:** 18 Dec 2024 **Accepted:** 13 Jan 2025 **Published:** 20 Jan 2025

**Academic Editor:** Riccardo Giuseppe Bertolo **Copy Editor:** Ting-Ting Hu **Production Editor:** Ting-Ting Hu

## Abstract

Partial nephrectomy (PN) has become the standard of treatment for most T1 renal masses and is suitable for selected T2 renal cortical masses. In this setting, the management of complex renal masses (CRM) requires a



© The Author(s) 2025. **Open Access** This article is licensed under a Creative Commons Attribution 4.0 International License (<https://creativecommons.org/licenses/by/4.0/>), which permits unrestricted use, sharing, adaptation, distribution and reproduction in any medium or format, for any purpose, even commercially, as long as you give appropriate credit to the original author(s) and the source, provide a link to the Creative Commons license, and indicate if changes were made.



thorough understanding of the potential risks and benefits of both PN and radical nephrectomy (RN). Indeed, thanks to the advent of robotic surgery, indications of PN have expanded to include larger tumors and CRM, despite the associated surgical complexity and oncologic risks. The decision-making process for CRM treatment with PN or RN is complex. Thus, the current review aims to explore the decision-making essentials for patients with CRM, identify research gaps, and address the clinical challenge of determining the most suitable surgical approach. Current evidence suggests that while PN offers a clear advantage in renal tissue preservation, it may carry higher perioperative risks compared to RN. However, these risks should be balanced with the long-term benefits of renal function preservation. In conclusion, further high-quality, prospective studies are needed to better define the comparative effectiveness of PN vs. RN to guide clinical decision-making for CRM.

**Keywords:** Partial nephrectomy, radical nephrectomy, complex renal masses, renal preservation surgery, renal cell carcinoma, RCC

## INTRODUCTION

Renal cell carcinoma (RCC) accounted for 431,288 new cases globally in 2020, representing approximately 2.2% of all cancer diagnoses. RCC is the most common form of kidney cancer, comprising about 90% of all renal malignant masses. It ranks as the 16th most common malignancy worldwide and is the 6th most frequently diagnosed cancer in men<sup>[1]</sup>. Commonly recognized risk factors are several metabolic disorders such as diabetes, obesity, metabolic syndrome and chronic kidney disease (CKD)<sup>[2,3,4]</sup>. Moreover, in developed countries, the improvement and spreading of imaging techniques have promoted the incidental detection of renal masses. In this setting, current guidelines equally recommend surveillance, ablation therapies and surgery<sup>[5,6]</sup>. Among all the therapeutical options, nephron sparing surgery (NSS), when feasible, is widely recognized to be the preferred surgical method to manage T1a and T1b exophytic, favorably located, masses especially when using min-invasive approach<sup>[6,7,8,9,10]</sup>. When addressing complex renal masses (CRM), which include both larger and anatomically challenging cases, the historical preference often leaned towards radical nephrectomy (RN) due to the surgical complexity and potential oncologic risks<sup>[11,12]</sup>. Indeed, despite the lack of a standardized definition, CRM typically refers to renal tumors with a RENAL score of > 9, indicating high complexity due to their size, location, and closeness to critical structures<sup>[13,14,15,16,17]</sup>. However, with advancements in robotic surgical techniques, the scope for NSS has expanded, making partial nephrectomy (PN) a viable option for managing these CRM scenarios, especially in referral centers<sup>[6,18,19]</sup>. Yet, oncologic safety remains a paramount concern across all patient groups, especially in younger and healthier individuals. In this setting, the decision-making process for treating CRM with PN or RN is intricate, demanding a careful assessment of the risks and benefits associated with these surgical options.

Given the existence of a grey zone in the management of CRM, this review aims to delve into the decision-making essentials for patients presenting with this kind of malignancy, identify gaps in existing research, and address the clinical challenge of guiding physicians to choose the most suitable surgical approach for each patient by summarizing and organizing current evidence regarding PN vs. RN approaches.

## METHODS

In August 2024, the most eminent scientific databases, including PubMed, Embase, and the Cochrane Library, were queried to collect scientific manuscripts related to CRM. Consequently, this research encompassed publications up to July 2024.

### Search strategy and data extraction

The search strategy was formulated by combining essential terms pertinent to the objectives of this non-systematic review. These terms included: (“partial nephrectomy” OR “PN” OR “nephron-sparing surgery” OR “NSS”) AND (“complex renal masses” OR “complex kidney tumors” OR “high-complexity renal tumors” OR “CRM”) AND (“radical nephrectomy” OR “RN”) AND (“oncologic outcomes” OR “cancer control” OR “tumor recurrence” OR “survival rates”) AND (“surgical complications” OR “postoperative complications” OR “perioperative outcomes”) AND (“renal function preservation” OR “kidney function preservation” OR “nephron preservation”) AND (“RENAL nephrometry score” > 9 OR “PADUA score” > 9). These selected keywords were crucial for a comprehensive collection of literature addressing various aspects of nephrectomy procedures for CRM, such as procedural specifics, outcomes, and follow-up methods.

The review targeted studies offering in-depth descriptions of the procedures and outcomes related to PN and/or RN. To ensure a comprehensive and unbiased collection of studies, additional sources were located through manual searches of reference lists in relevant studies and review articles.

Data extraction was conducted independently by two authors (P.C. and A.A.), using a predetermined approach to address any discrepancies. In instances of disagreement, a consensus was achieved by consulting an Assistant Professor (S.D.P.). This methodical collaboration ensured the accuracy and dependability of the data compiled in our review.

### Quantification of the anatomic complexity of renal masses

Structured, reproducible, and quantitative scoring systems to describe and classify the most surgically relevant anatomical features of solid renal neoplasms are mandatory. Several scoring systems, known as “nephrometry scores”, have been developed to objectively characterize renal tumor complexity [Table 1]. The decision-making for CRM benefits from standardized reporting of renal tumor size, location, and depth<sup>[18,20,21]</sup>. Nephrometric scores were specifically developed to predict the risk of complications from NSS based on lesion complexity. In the literature, among various scores defining complexity of a renal mass, the most used one is that a CRM is defined as a cortical neoplasm with a RENAL Nephrometry Score > 9<sup>[6,13,15]</sup>. Similarly, the PADUA score, an alternative classification system categorizing the overall anatomic complexity into low, intermediate, or high categories (scores of 6-7, 8-9, and 10-14, respectively), also defines a CRM as a renal mass having a score greater than 9<sup>[22]</sup>. Additionally, for comprehensive assessments, calculators are available that allow for the conversion between RENAL and PADUA scores, facilitating comparisons across studies that may use different systems. To streamline and enhance the predictive capability of nephrometry scores, Ficarra *et al.* introduced the Simplified PADUA Renal (SPARE) scoring system<sup>[23]</sup>. This model simplifies the assessment by focusing on four key anatomical features: rim location, renal sinus involvement, exophytic rate, and maximal tumor size. The effectiveness of the SPARE system has been validated in several studies, comparing its predictive accuracy with that of the RENAL and PADUA scores<sup>[24]</sup>.

Unfortunately, these nephrometry scores do not account for all the necessary elements that define a CRM. Although numerous nephrometry scores exist, there is a pressing need to include key elements from these scores in radiological assessments, as this would provide a richer data set for comparison and enhance their utility in clinical decision-making. Future considerations should include parameters such as adjacent organ involvement, patient’s body mass index, and characteristics such as the density and distribution of perirenal fat, including the tricky ‘toxic fat’ that complicates surgical procedures by affecting visibility and dissection difficulty. These additional aspects are essential for a comprehensive assessment of CRM and should be integrated into the next nephrometry scoring systems to enhance the precision of surgical planning and

**Table 1. Summary of the similarities and differences of the most used nephrometry scoring systems**

Scores	Size (diameter)	Growth	Distance to renal sinus	Anatomical location of the tumor	Location with respect to polar line	Complexity
RENAL	< 4 cm: 1pt 4-7 cm: 2pt > 7 cm: 3pt	> 50% exophytic: 1pt < 50% exophytic: 2pt Entirely endophytic: 3pt	> 7 mm: 1pt 4-7 mm: 2pt < 4 mm: 3pt	Anterior or posterior: 1pt On the lateral border: 2pt	Upper polar line: 1pt Below polar line: 2pt	Low: 4-6pt Moderate: 7-9pt High: 10-12pt
PADUA	< 4 cm: 1pt 4-7 cm: 2pt > 7 cm: 3pt	> 50% exophytic: 1pt < 50% exophytic: 2pt Entirely endophytic: 3pt	Not involving the renal rim: 1pt Involving the renal rim: 2pt	Anterior or posterior: 1 pt On the lateral border: 2 pt	Not available	Low: 6-7pt Intermediate: 8-9pt High: 10-14pt
SPARE	≤ 4 cm: 1pt > 4 cm: 2pt	> 50% exophytic: 1pt < 50% exophytic: 2pt	> 7mm: 1pt ≤ 7 mm: 2pt	Not available	Not available	Low: 4pt Moderate: 5-6pt High: 7-8pt

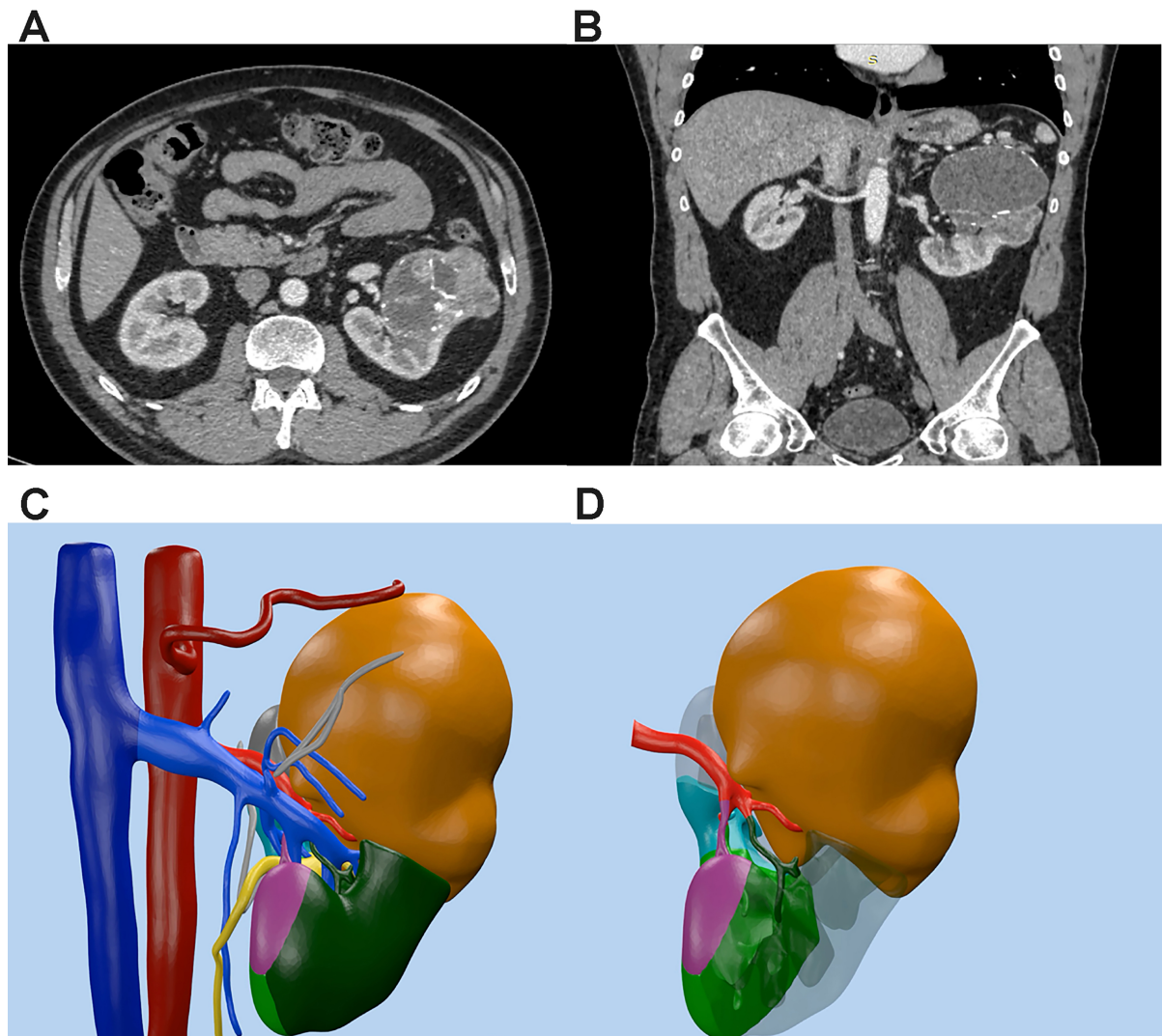
outcome prediction.

### Advancing surgical planning with 3D reconstructions

The scientific community is currently navigating the age of precision medicine, which is progressively being implemented in surgical practices, including oncological conditions. During the last decade, the integration of 3D vascular model (3DVM) reconstructions significantly enhances the application of these models in preoperative evaluation and surgical planning<sup>[25,26,27]</sup>. In this context, 3DVMs exceed the traditional 2D computed tomography (CT) scans, which were previously insufficient for comprehensive preoperative evaluation of CRM [Figure 1A and B]<sup>[28,29]</sup>. Indeed, this detailed view facilitates the assessment of the tumor's complexity and assists in strategizing the optimal approach for resection, minimizing potential surgical complications.

In a recent study by Grosso *et al.*, a detailed analysis using a propensity-score matched approach was performed comparing patients undergoing robot-assisted PN (RAPN) for renal neoplasms<sup>[30]</sup>. This analysis distinctively focused on the application of 3DVMs. Notably, the use of these models facilitated a more targeted approach in vascular clamping - selective clamping was preferred significantly more in the 3DVM group than in the non-3DVM group (21% *vs.* 9%,  $P = 0.03$ ). This choice is attributed to the enhanced and detailed understanding of renal vasculature provided by the models. Moreover, the integration of “rainbow technology” in 3D rendering marks a significant advancement [Figure 1]. This technology color-codes the vascular regions, allowing surgeons to visualize and navigate the complex arterial network of the kidney.

Further insights were gained from a sensitivity analysis across different PADUA risk categories (low-risk PADUA 6-7, intermediate-risk PADUA 8-9, high-risk PADUA ≥ 10). This analysis highlighted that the functional benefits of using 3DVMs were predominantly seen in high-risk category masses. The study concluded that both cohorts demonstrated similar perioperative risk profiles and oncological outcomes. This similarity underscores the potential of 3DVMs to enhance surgical precision without compromising safety or efficacy in managing renal neoplasms<sup>[30]</sup>. Moreover, the utilization of 3DVMs in preoperative planning not only assists in the visualization but also in the simulation of surgical steps, offering a clear roadmap for the surgery. This advanced preparation is vital for improving the accuracy of tumor resection and preserving as much of the healthy kidney tissue as possible, thereby enhancing postoperative outcomes<sup>[31]</sup>. Ultimately, the adoption of the single port robotic system has introduced significant advantages, including shorter hospitalization times and optimized postoperative outcomes, further



**Figure 1.** CT findings of patients with CRM and 3DVM preoperative reconstruction - rainbow technology. (A and B) Axial and coronal CT scan of high complexity renal cell carcinoma (RENAL = 12); (C and D) 3DVM reconstruction (red represents artery, blue indicates vein, and yellow stands for collective system. Brown denotes tumor). CRM: Complex renal masses; 3DVM: 3D vascular model.

advancing the role of precision medicine in minimally invasive surgery<sup>[32]</sup>.

## EVIDENCE SYNTHESIS

### Current factors guiding the decision-making process between PN vs. RN

Currently, PN is preferred for treating localized renal masses due to its effective cancer control and superior preservation of renal function post-surgery compared to RN. Consequently, PN has surpassed its initial narrow scope of indications, which included conditions such as a solitary kidney, bilateral renal masses, or pre-existing CKD<sup>[33,34,35,36,37,38]</sup>. This expansion is driven by the potential decline in quality of life and increased mortality risks associated with deteriorating renal function and the subsequent necessity of dialysis<sup>[39,40]</sup>. Indeed, the use of PN has progressively broadened to include patients with a normal contralateral kidney and normal renal functional indexes, thus reducing the likelihood of post-surgical CKD and maintaining oncological results comparable to those of RN<sup>[6,41]</sup>. To date, international Guidelines have not included the preoperative nephrological assessment and the significant role of the multidisciplinary team in their

recommendations<sup>[42]</sup>. Indeed, the management of CRM currently depends on two main factors: the specific center experience, influenced by institutional logistics, and the availability of multidisciplinary technologies and specialists, and the surgeon's perspective, which includes preference, skill, and confidence in performing PN over RN<sup>[43,44]</sup>.

### Functional outcomes

A preserved renal function following PN is the most widely acknowledged advantage of these procedures over radical ones. Although evidence suggests that survival outcomes and life expectancy of patients who underwent PN are not inferior to patients treated with RN<sup>[4,45,46,47]</sup>, the overall prognosis and overall survival (OS) may benefit from NSS by also lowering the risk of cardiovascular and metabolic sequelae<sup>[48,49]</sup>. Indeed, OS has been correlated with an estimated glomerular filtration rate (eGFR) decline below 45 ml/min/1.73 m<sup>2</sup><sup>[50]</sup>.

Initial studies highlighting these benefits were based on retrospective single-institution reports, showing that patients who underwent PN for a renal mass experienced better renal functional outcomes than those who underwent RN<sup>[51]</sup>. Indeed, Lau *et al.* reported early suggestive evidence that both NSS and RN are equally safe. However, NSS achieved better functional preservation supported by a reduction in proteinuria and chronic renal insufficiency, compared to RN<sup>[51]</sup>.

To investigate the effectiveness of PN in preserving renal function, Simmons *et al.* assessed postoperative renal outcomes by using the RENAL scoring system. They observed a positive correlation between the comprehensive RENAL score and the preservation of long-term eGFR. Additionally, they found that alterations in tumor diameter and RENAL Score corresponded to fluctuations of 0.5% and 1.6% in postoperative eGFR, respectively<sup>[52]</sup>. Similarly, research findings have shown that for each 1-point increase in the RENAL score or for each 1-cm increase in tumor size, there is a consequent decline in eGFR of 2.5% ( $P = 0.002$ ) and 1.8% ( $P = 0.013$ ), respectively<sup>[53]</sup>.

Overall, it has been shown that a higher RENAL score can predict functional outcomes following PN. Therefore, there has been concern regarding whether PN for CRM offers substantial functional advantages over RN to warrant the potentially heightened risks.

In this scenario, Cerrato *et al.* reported findings from a multicenter analysis of the ROSULA (RObotic SURgery for LArge) study, which is the first to compare functional outcomes of minimally invasive RN (MIS-RN) and RAPN in the setting of CRM (defined as cortical neoplasm with a RENAL score of 10-12 points). The authors concluded that RAPN provides functional benefit, with decreased difference in postoperative eGFR ( $\Delta$ eGFR) and risk of developing a *de-novo* eGFR < 60 and < 45 mL/min/1.73 m<sup>2</sup>, without a significantly higher rate of major complications<sup>[15]</sup>. Despite well-founded theoretical concerns, these findings indicate that retaining the remaining parenchyma in CRM could still represent a noteworthy increase in functional nephron mass compared to the total loss of functional parenchyma in the affected kidney during RN.

Taken together, literature data suggest an average less clinically apparent renal morbidity for patients who underwent elective PN vs. RN.

### Prediction of renal failure

Even with the development of advanced models aimed at estimating renal function after surgery<sup>[54,55,56]</sup>, forecasting postoperative kidney performance in patients undergoing PN or RN for localized renal tumors

with initially preserved renal function, continues to be a highly intricate process in the clinical settings<sup>[57]</sup>.

Interesting findings come from Pecoraro *et al.*, who declared that the risk of post-PN acute kidney impairment (AKI) was mainly related to tumor complexity and surgery-related factors, including warm ischemia time (WIT) and surgical approach. Moreover, the authors reported predictors of new-onset CKD during the follow-up including nonmodifiable patient-related characteristics, namely: the preoperative “functional nephrological reserve” (i.e., higher baseline eGFR), age-adjusted Charlson Comorbidity Index, and tumor complexity. Overall, these findings suggest that the likelihood of postoperative CKD is conditioned by both the baseline kidney characteristics and the volume of renal parenchyma spared<sup>[58,59,60]</sup>.

Interestingly, Off-clamp robotic PN (Off C-RPN) has emerged as a viable option, even in the hands of training surgeons. A propensity score-matched analysis conducted at a single institution demonstrated that, after appropriate training, perioperative outcomes of Off C-RPN performed by training surgeons were comparable to those achieved by expert surgeons, including hospital stay, complication rates, and functional outcomes such as hemoglobin and eGFR at discharge. These findings suggest that with proper training, the learning curve has a negligible impact on outcomes, further supporting the feasibility of PN in complex settings<sup>[61]</sup>.

A recent study by Saitta introduces the RENSAFE model, which predicts postoperative AKI and CKD in patients undergoing renal surgery. The model considers key variables such as male sex, the American Society of Anesthesiologists (ASA) score, hypertension, RENAL score, preoperative eGFR, and surgical type (RN vs. PN), showing an area under the curve (AUC) of 0.80 for AKI prediction and 0.76 for CKD  $\geq$  3b prediction. The authors describe the model as an easily implementable tool that reliably predicts postoperative AKI and CKD, thus facilitating point-of-care decision-making for both urologists and patients<sup>[57]</sup>. Additionally, a study by Flammia *et al.* investigated the risk of CKD upstaging at 3-year follow-up in patients who underwent RAPN. The study utilized a multi-institutional database to identify patients treated with RAPN for localized renal tumors and defined significant CKD (sCKD) upstaging as the development of newly onset CKD stages 3a, 3b, and 4/5. The model accurately predicted a 3-year sCKD-upstaging of 84% and highlighted risk categories with varying sCKD-upstaging rates<sup>[62]</sup>.

These predictive tools may add valuable insights to the ongoing debate between the use of RN and PN, enhancing patient counseling and management by accurately forecasting postoperative outcomes.

### **How does renal score or complexity affect the survival outcomes?**

Although widely accepted indications for PN for large polar or mostly exophytic masses, debate persists regarding its application for CRM. Concerns have been raised regarding the oncological effectiveness and safety of PN in this context<sup>[63]</sup>. This comes from different historical evidence where increasing RENAL scores showed an association with worsened oncological outcomes<sup>[64]</sup>. Indeed, Bradshaw *et al.* reported results from a retrospective multicenter propensity score-matched analysis with overall 648 patients (216 RAPN vs. 432 MIS-RN). The authors showed that increasing RENAL scores (HR = 1.3,  $P = 0.037$ ), high tumor grade (HR = 2.5,  $P = 0.043$ ), and histology findings of sarcomatoid tumor (HR = 2.8,  $P = 0.02$ ) were associated with higher risk of recurrence<sup>[63]</sup>. However, more recent and promising evidence has reported more encouraging results and a progressive shift in favor of NSS for CRM management. Indeed, an interesting head-to-head comparison of RN and PN for the treatment of CRM using the multi-institutional database ROSULA was reported by Cerrato *et al.* The authors found no association between PN and survival outcomes for renal masses with a RENAL score of 10-12, even in cases of higher-stage disease. Additionally, results from the Kaplan-Meier Analysis show no statistically significant differences in 5-year

cancer-specific survival (CSS) between RN and PN for pT1 ( $P = 0.473$ ), pT2 ( $P = 0.735$ ), and pT3 ( $P = 0.581$ ) malignancies. Additionally, there were no significant differences in 5-year non-CSS between RN and PN for pT1 ( $P = 0.107$ ), pT2 ( $P = 0.485$ ), and pT3 ( $P = 0.403$ ) tumors. Similarly, no significant differences were found in OS for patients diagnosed with pT1 ( $P = 0.078$ ), pT2 ( $P = 0.442$ ), and pT3 ( $P = 0.863$ ) masses<sup>[13]</sup>.

From a pathological standpoint, nuclear high-grade is commonly reported to be associated with more aggressive pathology and worsened survival outcomes<sup>[65,63,66]</sup>. Moreover, greater tumor complexity has been linked to an increased risk of high-grade disease. A systematic review and meta-analysis by Veccia *et al.* revealed that patients with the diagnosis of clinical T1 malignancies, who were upstaged to pT3a, had a higher risk of having a nuclear grade of 3 or higher (OR = 2.57,  $P < 0.00001$ ). This suggests that high-grade disease may independently correlate with a greater risk of upstaging to pT3a<sup>[65]</sup>. In this scenario, RCC recurrence showed to be independently associated with higher-grade disease (HR = 2.38,  $P < 0.001$ ) by van der Mijn *et al.*<sup>[67]</sup>. On the other hand, low-grade disease has been linked to better OS (HR = 1.18,  $P = 0.018$ ) and CSS (HR = 1.18,  $P = 0.017$ )<sup>[13]</sup>. Overall, all those data suggest high-grade disease occurs more frequently in tumors of high complexity. Consequently, even in the management of CRM, high-grade disease is associated with poorer survival outcomes and the type of surgery did not result in differing outcomes.

In recent literature, the survival benefit observed for PN over RN is primarily attributed to the subsequent metabolic effects resulting from the preservation of renal function<sup>[68,69]</sup>. However, those data come from retrospective and observational reports which may be influenced by selection bias. Indeed, due to the relationship between tumor's biology and complexity, patients with tumors in advantageous locations are more frequently chosen for PN over RN at many medical centers<sup>[70]</sup>. This provocative finding implies that the OS benefit might partially result from the selection of patients with more favorable renal tumors, in terms of size and location, for PN. Therefore, numerous inherent imbalances related to unmeasured confounders in cohorts comparing the effectiveness of PN and RN likely exaggerate the observed treatment effect of PN.

### **Assessing the risk: complications associated with PN in CRM management**

Historically, PN has been linked to a higher incidence of complications compared to RN. Indeed, in 2010, the EORTC 30904 trial showed higher perioperative bleeding rates in patients who underwent PN with respect to patients who underwent RN, regardless of tumor complexity<sup>[71]</sup>. PN has been demonstrated to be a safe management option for renal masses, with infrequent and manageable complications mostly connected to the anatomical complexity of the tumor and the individual patient's characteristics. However, increasing RENAL score has been associated with increasing risk of complications in PN<sup>[53,72]</sup>. Various radiographic scoring systems are designed to assess the risk of postoperative complications using preoperative imaging. Anatomic characteristics of renal masses, including size and depth, are typically viewed as predictors of major complications following PN, including hemorrhage and urinary fistula<sup>[73]</sup>. For instance, Wheat *et al.* recently identified that for each 1-cm increase in tumor size, the odds of encountering a major complication rose by 33%<sup>[74]</sup>. For this reason, a thorough assessment of the risks of perioperative morbidity and complications is essential in the decision-making process for any PN, and even more critical when dealing with CRM.

Liu *et al.* analyzed tumors classified by the RENAL score as low, moderate, and high complexity and treated with laparoscopic PN. They observed a significantly higher rate of overall complications in tumors of moderate to high complexity compared to those with low ( $P = 0.01$ )<sup>[75]</sup>. In a retrospective study involving 128 patients who had either open or laparoscopic PN, Reddy *et al.* found that a higher RENAL score



significantly raised the likelihood of complications (OR = 1.29,  $P = 0.043$ )<sup>[76]</sup>. A recent retrospective cohort study, involving five institutions, revealed increased rates of perioperative and postoperative complications after PN for CRM, although the majority of these complications were minor (grade I or II)<sup>[77]</sup>. Furthermore, evidence from high-volume centers indicates that complication rates for elective PN and certain historically reported complications, such as fistulas, are becoming increasingly rare due to advancements in modern surgical techniques<sup>[78]</sup>. A recent analysis from a multi-institutional database, comparing outcomes from CRM managed with PN vs. RN, showed that neither the type of surgery ( $P = 0.094$ ) nor tumor size ( $P = 0.515$ ) was linked to major complications. Thus, literature indicates that management of CRM with PN is an effective oncological option and does not increase the risk of complications<sup>[13]</sup>.

Finally, in a single-center report, Malkoc *et al.* reported the outcome of robotic NSS for management of renal tumors > 7 cm in size. The major complication rate stood at 3.7%, with 52.8% of patients undergoing RAPN presenting RENAL scores of 10-12<sup>[79]</sup>. These complication rates were similar to those reported for PN in T1a tumors<sup>[80]</sup>. Similarly, Yim *et al.* reported in a multicenter retrospective analysis for cT3aN0M0 RCC 12.1% of overall complication rate with 4.5% of major complication<sup>[81]</sup>.

Overall, although larger and more complex tumors may be associated with a higher morbidity profile, these reports confirm that the overall and major complication rates remain acceptable and manageable in reference centers.

Generally, over the anatomical complexity of the tumor, the decision-making process should take into account both patient and surgeon-related clinical factors. Indeed, the selection for patients with CRM suitable for PN should also consider ability to handle potential complications. In this process, surgeons should consider that older patients may face a higher risk of both surgical and medical complications following PN compared to RN, and their recovery ability may be reduced<sup>[82]</sup>. In this regard, the impact of comorbidities must be included in the decision-making process for surgical treatment<sup>[83]</sup>.

### Composite outcome

The concept of “Trifecta”, as defined as negative surgical margin, no major urological complications, and no AKI on postoperative period, has been progressively adopted as a standard measure to systematically report successful outcomes for NSS<sup>[84]</sup>. This composite outcome has been traditionally described for surgical NSS approaches, focusing on oncologic efficacy, safety, and preservation of renal function. However, even for non-surgical NSS, such as ablations, recent reports have employed the same aggregated outcome linking oncological safety with surgical and renal preservation<sup>[85,86]</sup>.

Focusing on Trifecta for CRM, Campi *et al.* reported Trifecta achievement of robotic vs. open PN for highly complex (PADUA > 10) tumors in high-volume referral centers. The authors collected a significantly lower morbidity for RAPN compared to open PN in achieving Trifecta criteria (69.7% vs. 42.6%,  $P < 0.004$ ). Indeed, their multivariable analyses indicate that the surgical approach independently influenced the risk of “sub-optimal” PN. This observation could be attributed to the varying levels of experience and expertise among robotic and open surgeons. However, the impact of these factors was likely reduced, given that the cohort included patients treated by high-volume surgeons at tertiary referral centers. Considering the complexity of cases handled, as well as those for CRM in general, tertiary referral centers are especially crucial for managing complex conditions, underscoring their importance in ensuring optimal surgical outcomes<sup>[22]</sup>.

However, various definitions of the Trifecta have been developed over time by different groups. Insights derived from the Surface-Intermediate-Base Margin Score International Consortium, as reported by Campi *et al.*, highlight substantial variability in the rates of unsuccessful partial nephrectomies, ranging from 66.4% to 85.9%, contingent upon the Trifecta definition employed. This variability is largely attributed to the diverse thresholds set by various Trifecta scores for defining “clinically meaningful” surgical complications, such as the severity of complications (Clavien-Dindo II *vs.* Clavien-Dindo III) and the metrics used to measure post-surgical renal functional damage - namely WIT *vs.* percentage changes in postoperative eGFR<sup>[87]</sup>. Overall, evaluating the influence of Trifecta definitions on the success rate of PN still represents a significant gap in the existing research and it is an unmet need. To fill this gap, evaluating Trifecta scores that are adjusted for standardized outcomes, individual patient characteristics and tumor features may enhance the reliability and applicability of these metrics in clinical practice.

## CONCLUSION

Our findings suggest that CRM requires an intricate decision-making process that should take into consideration all the potential benefits and risks of PN over RN. Despite literature suggesting similar oncological outcomes, it is essential to examine the limitations and potential complications of each treatment approach. In addition to tumor complexity, surgeons should consider clinical factors such as contralateral renal function, patient age, and comorbidity profile.

Current evidence does not allow for a conclusive resolution of the open question on the superiority of PN over RN and vice versa. Indeed, most data are based on retrospective results and more high-quality, better-designed prospective studies are needed to definitively answer the open question of effectiveness of PN over RN in CRM. In the meantime, patients with CRM requiring a NSS approach should be referred to tertiary centers specializing in advanced PN surgery to optimize outcomes.

## DECLARATIONS

### Authors' contributions

Conceptualization: Pandolfo SD, Conforti P

Methodology: Pandolfo SD, Conforti P, Manfredi C

Formal analysis: Wu Z

Investigation: Giulioni C, Lucarelli G

Resources: Pandolfo SD, Conforti P

Data curation: Siracusano S, Lucarelli G

Writing - original draft preparation: Pandolfo SD, Conforti P

Writing - review and editing: Manfredi C, Lasorsa F, Perdonà S, Tufano A, Izzo A

Visualization: Manfredi C, Siracusano S, Ferro M

Project administration: Pandolfo SD

### Availability of data and materials

Not applicable.

### Financial support and sponsorship

None.

### Conflicts of interest

All authors declared that there are no conflicts of interest.

### Ethical approval and consent to participate

Not applicable.

### Consent for publication

Not applicable.

### Copyright

© The Author(s) 2025.

## REFERENCES

1. Sung H, Ferlay J, Siegel RL, et al. Global cancer statistics 2020: GLOBOCAN estimates of incidence and mortality worldwide for 36 cancers in 185 countries. *CA Cancer J Clin.* 2021;71:209-49. DOI PubMed
2. Campi R, Rebez G, Klatte T, et al. Effect of smoking, hypertension and lifestyle factors on kidney cancer - perspectives for prevention and screening programmes. *Nat Rev Urol.* 2023;20:669-81. DOI PubMed
3. Milella M, Rutigliano M, Lasorsa F, et al. The role of MUC1 in renal cell carcinoma. *Biomolecules.* 2024;14:315. DOI PubMed PMC
4. Campbell SC, Clark PE, Chang SS, Karam JA, Souter L, Uzzo RG. Renal mass and localized renal cancer: evaluation, management, and follow-up: AUA guideline: part I. *J Urol.* 2021;206:199-208. DOI PubMed
5. Ljungberg B, Albiges L, Abu-Ghanem Y, et al. European association of urology guidelines on renal cell carcinoma: the 2022 update. *Eur Urol.* 2022;82:399-410. DOI PubMed
6. Pandolfo SD, Cerrato C, Wu Z, et al. A systematic review of robot-assisted partial nephrectomy outcomes for advanced indications: large tumors (cT2-T3), solitary kidney, completely endophytic, hilar, recurrent, and multiple renal tumors. *Asian J Urol.* 2023;10:390-406. DOI PubMed PMC
7. Borghesi M, Brunocilla E, Schiavina R, Martorana G. Positive surgical margins after nephron-sparing surgery for renal cell carcinoma: incidence, clinical impact, and management. *Clin Genitourin Cancer.* 2013;11:5-9. DOI PubMed
8. Rakul SA, Pozdnyakov KV, Eloev RA. [Nephron sparing surgery in complex kidney tumors]. *Urologiia.* 2020;6:99-105. PubMed
9. Simone G, De Nunzio C, Ferriero M, et al. Trends in the use of partial nephrectomy for cT1 renal tumors: analysis of a 10-yr European multicenter dataset. *Eur J Surg Oncol.* 2016;42:1729-35. DOI PubMed
10. Pandolfo SD, Wu Z, Campi R, et al. Outcomes and techniques of Robotic-Assisted Partial Nephrectomy (RAPN) for renal hilar masses: a comprehensive systematic review. *Cancers.* 2024;16:693. DOI PubMed PMC
11. Ambani SN, Morgan TM, Montgomery JS, et al. Predictors of delayed intervention for patients on active surveillance for small renal masses: does renal mass biopsy influence our decision? *Urology.* 2016;98:88-96. DOI PubMed
12. Pierorazio PM, Johnson MH, Ball MW, et al. Five-year analysis of a multi-institutional prospective clinical trial of delayed intervention and surveillance for small renal masses: the DISSRM registry. *Eur Urol.* 2015;68:408-15. DOI PubMed
13. Cerrato C, Patel D, Autorino R, et al. Partial or radical nephrectomy for complex renal mass: a comparative analysis of oncological outcomes and complications from the ROSULA (Robotic Surgery for Large Renal Mass) collaborative group. *World J Urol.* 2023;41:747-55. DOI PubMed
14. Ferriero M, Brassetti A, Mastroianni R, et al. Off-clamp robot-assisted partial nephrectomy for purely hilar tumors: technique, perioperative, oncologic and functional outcomes from a single center series. *Eur J Surg Oncol.* 2022;48:1848-53. DOI PubMed
15. Cerrato C, Meagher MF, Autorino R, et al. Partial versus radical nephrectomy for complex renal mass: multicenter comparative analysis of functional outcomes (Rosula collaborative group). *Minerva Urol Nephrol.* 2023;75:425-33. DOI PubMed
16. Kim SP, Shah ND, Weight CJ, et al. Contemporary trends in nephrectomy for renal cell carcinoma in the United States: results from a population based cohort. *J Urol.* 2011;186:1779-85. DOI
17. Bertolo R, Autorino R, Fiori C, et al. Expanding the indications of robotic partial nephrectomy for highly complex renal tumors: urologists' perception of the impact of hyperaccuracy three-dimensional reconstruction. *J Laparoendosc Adv Surg Tech A.* 2019;29:233-9. DOI PubMed
18. Abdel Raheem A, Alatawi A, Kim DK, et al. Outcomes of high-complexity renal tumours with a preoperative aspects and dimensions used for an anatomical (PADUA) score of  $\geq 10$  after robot-assisted partial nephrectomy with a median 46.5-month follow-up: a tertiary centre experience. *BJU Int.* 2016;118:770-8. DOI PubMed
19. Abedali ZA, Monn MF, Huddleston P, et al. Robotic and open partial nephrectomy for intermediate and high complexity tumors: a matched-pairs comparison of surgical outcomes at a single institution. *Scand J Urol.* 2020;54:313-7. DOI PubMed
20. Altunrende F, Laydner H, Hernandez AV, et al. Correlation of the RENAL nephrometry score with warm ischemia time after robotic partial nephrectomy. *World J Urol.* 2013;31:1165-9. DOI PubMed
21. Rosiello G, Piazza P, Puliatti S, et al. Simplified PADUA renal (SPARE) nephrometry score validation and long-term outcomes after robot-assisted partial nephrectomy. *Urol Oncol.* 2022;40:65.e1-9. DOI PubMed
22. Campi R, Di Maida F, Lane BR, et al; Members of the SIB International Consortium. Impact of surgical approach and resection technique on the risk of Trifecta failure after partial nephrectomy for highly complex renal masses. *Eur J Surg Oncol.* 2022;48:687-93.

[DOI PubMed](#)

23. Ficarra V, Porpiglia F, Crestani A, et al. The Simplified PADUA RENal (SPARE) nephrometry system: a novel classification of parenchymal renal tumours suitable for partial nephrectomy. *BJU Int.* 2019;124:621-8. [DOI PubMed](#)
24. Klein C, Margue G, Champy C, et al. Can Simplified PADUA Renal (SPARE) Nephrometry scoring system help predict renal function outcomes after robot-assisted partial nephrectomy? *Minerva Urol Nephrol.* 2023;75:569-76. [DOI PubMed](#)
25. Rivero Belenchón I, Congregado Ruíz CB, Gómez Ciriza G, et al. How to obtain a 3D printed model of renal cell carcinoma (RCC) with venous tumor thrombus extension (VTE) for surgical simulation (phase I NCT03738488). *Updates Surg.* 2020;72:1237-46. [DOI PubMed](#)
26. Grosso AA, Di Maida F, Tellini R, et al. Robot-assisted partial nephrectomy with 3D preoperative surgical planning: video presentation of the florentine experience. *Int Braz J Urol.* 2021;47:1272-3. [DOI PubMed PMC](#)
27. Bignante G, Orsini A, Lasorsa F, et al. Robotic-assisted surgery for the treatment of urologic cancers: recent advances. *Expert Rev Med Devices.* 2024;21:1165-77. [DOI PubMed](#)
28. Bianchi L, Schiavina R, Bortolani B, et al. Interpreting nephrometry scores with three-dimensional virtual modelling for better planning of robotic partial nephrectomy and predicting complications. *Urol Oncol.* 2021;39:836.e1-9. [DOI PubMed](#)
29. Amparore D, Piramide F, Pecoraro A, et al. Identification of recurrent anatomical clusters using three-dimensional virtual models for complex renal tumors with an imperative indication for nephron-sparing surgery: new technological tools for driving decision-making. *Eur Urol Open Sci.* 2022;38:60-6. [DOI PubMed PMC](#)
30. Grosso AA, Di Maida F, Lambertini L, et al. Three-dimensional virtual model for robot-assisted partial nephrectomy: a propensity-score matching analysis with a contemporary control group. *World J Urol.* 2024;42:338. [DOI PubMed PMC](#)
31. Amparore D, Piramide F, Checucci E, et al. Three-dimensional virtual models of the kidney with colored perfusion regions: a new algorithm-based tool for optimizing the clamping strategy during robot-assisted partial nephrectomy. *Eur Urol.* 2023;84:418-25. [DOI PubMed](#)
32. Lasorsa F, Orsini A, Bignante G, et al. Predictors of delayed hospital discharge after robot-assisted partial nephrectomy: the impact of single-port robotic surgery. *World J Urol.* 2024;43:30. [DOI PubMed](#)
33. Hafez KS, Fergany AF, Novick AC. Nephron sparing surgery for localized renal cell carcinoma: impact of tumor size on patient survival, tumor recurrence and TNM staging. *J Urol.* 1999;162:1930-3. [DOI PubMed](#)
34. Novick AC, Gephardt G, Guz B, Steinmuller D, Tubbs RR. Long-term follow-up after partial removal of a solitary kidney. *N Engl J Med.* 1991;325:1058-62. [DOI PubMed](#)
35. Gill IS, Aron M, Gervais DA, Jewett MA. Clinical practice. Small renal mass. *N Engl J Med.* 2010;362:624-34. [DOI PubMed](#)
36. Go AS, Chertow GM, Fan D, McCulloch CE, Hsu CY. Chronic kidney disease and the risks of death, cardiovascular events, and hospitalization. *N Engl J Med.* 2004;351:1296-305. [DOI PubMed](#)
37. Culleton BF, Walsh M, Klarenbach SW, et al. Effect of frequent nocturnal hemodialysis vs conventional hemodialysis on left ventricular mass and quality of life: a randomized controlled trial. *JAMA.* 2007;298:1291-9. [DOI PubMed](#)
38. Di Maida F, Grosso AA, Sforza S, et al. Surgical management of synchronous, bilateral renal masses: a 1-decade referral center experience. *Eur Urol Focus.* 2022;8:1309-17. [DOI PubMed](#)
39. Britton CJ, Sharma V, Lohse CM, et al. Progression of chronic kidney disease following radical and partial nephrectomy. *Urology.* 2022;169:125-33. [DOI](#)
40. Takagi T, Kondo T, Omae K, et al. Comparison of progression to end-stage renal disease requiring dialysis after partial or radical nephrectomy for renal cell carcinoma in patients with severe chronic kidney disease. *Int Urol Nephrol.* 2016;48:1421-7. [DOI PubMed](#)
41. Swartling O, Rydell H, Stendahl M, Segelmark M, Trolle Lagerros Y, Evans M. CKD progression and mortality among men and women: a nationwide study in Sweden. *Am J Kidney Dis.* 2021;78:190-9.e1. [DOI](#)
42. Kinsey EN, George D. Can i get a multidisciplinary consult, please? *Eur Urol Focus.* 2020;6:9-10. [DOI PubMed](#)
43. Khandwala YS, Jeong IG, Kim JH, et al. The impact of surgeon volume on perioperative outcomes and cost for patients receiving robotic partial nephrectomy. *J Endourol.* 2017;31:851-7. [DOI PubMed](#)
44. Khandwala YS, Jeong IG, Han DH, et al. Surgeon preference of surgical approach for partial nephrectomy in patients with baseline chronic kidney disease: a nationwide population-based analysis in the USA. *Int Urol Nephrol.* 2017;49:1921-7. [DOI PubMed](#)
45. Alimi Q, Peyronnet B, Sebe P, et al. Comparison of short-term functional, oncological, and perioperative outcomes between laparoscopic and robotic partial nephrectomy beyond the learning curve. *J Laparoendosc Adv Surg Tech A.* 2018;28:1047-52. [DOI PubMed](#)
46. Antonelli A, Mari A, Longo N, et al; Collaborators. Role of clinical and surgical factors for the prediction of immediate, early and late functional results, and its relationship with cardiovascular outcome after partial nephrectomy: results from the prospective multicenter RECORd 1 project. *J Urol.* 2018;199:927-32. [DOI PubMed](#)
47. Chalouhy C, Ruck JM, Zhou T, et al. Robotic partial nephrectomy in patients with chronic kidney disease: objective measurement of short- and long-term renal functional outcomes. *J Endourol.* 2018;32:630-4. [DOI](#)
48. Clark J, Tauber J, Sheppard J, Brady TC. Early onset and broad activity of reproxalap in a randomized, double-masked, vehicle-controlled phase 2b trial in dry eye disease. *Am J Ophthalmol.* 2021;226:22-31. [DOI PubMed](#)
49. Pazeto CL, Macek P, Amaral B, et al. Optimal surgical outcome of minimally invasive partial nephrectomy (MIPN) based on an early postoperative estimated glomerular filtration rate (eGFR). *Curr Urol Rep.* 2021;22:36. [DOI PubMed](#)
50. Chandrasekar T, Boorjian SA, Capitanio U, Gershman B, Mir MC, Kutikov A. Collaborative review: factors influencing treatment

- decisions for patients with a localized solid renal mass. *Eur Urol.* 2021;80:575-88. DOI PubMed
51. Lau WK, Blute ML, Weaver AL, Torres VE, Zincke H. Matched comparison of radical nephrectomy vs nephron-sparing surgery in patients with unilateral renal cell carcinoma and a normal contralateral kidney. *Mayo Clin Proc.* 2000;75:1236-42. DOI PubMed
  52. Simmons MN, Lieser GC, Fergany AF, Kaouk J, Campbell SC. Association between warm ischemia time and renal parenchymal atrophy after partial nephrectomy. *J Urol.* 2013;189:1638-42. DOI PubMed
  53. Bruner B, Breau RH, Lohse CM, Leibovich BC, Blute ML. Renal nephrometry score is associated with urine leak after partial nephrectomy. *BJU Int.* 2011;108:67-72. DOI PubMed
  54. Rathi N, Palacios DA, Abramczyk E, et al. Predicting GFR after radical nephrectomy: the importance of split renal function. *World J Urol.* 2022;40:1011-8. DOI PubMed
  55. Tanaka H, Wang Y, Suk-Ouichai C, et al. Can we predict functional outcomes after partial nephrectomy? *J Urol.* 2019;201:693-701. DOI PubMed
  56. Crocero F, Fiori C, Capitanio U, et al. Estimated glomerular filtration rate decline at 1 year after minimally invasive partial nephrectomy: a multimodel comparison of predictors. *Eur Urol Open Sci.* 2022;38:52-9. DOI PubMed PMC
  57. Saitta C, Afari JA, Autorino R, et al. Development of a novel score (RENSAFE) to determine probability of acute kidney injury and renal functional decline post surgery: a multicenter analysis. *Urol Oncol.* 2023;41:487.e15-23. DOI PubMed
  58. Pecoraro A, Roussel E, Amparore D, et al. New-onset chronic kidney disease after surgery for localised renal masses in patients with two kidneys and preserved renal function: a contemporary multicentre study. *Eur Urol Open Sci.* 2023;52:100-8. DOI PubMed PMC
  59. Tuderti G, Brassetti A, Mastroianni R, et al. Expanding the limits of nephron-sparing surgery: surgical technique and mid-term outcomes of purely off-clamp robotic partial nephrectomy for totally endophytic renal tumors. *Int J Urol.* 2022;29:282-8. DOI PubMed
  60. Tuderti G, Mastroianni R, Anceschi U, et al. Assessing the trade-off between the safety and effectiveness of off-clamp robotic partial nephrectomy for renal masses with a high RENAL score: a propensity score-matched comparison of perioperative and functional outcomes in a multicenter analysis. *Eur Urol Focus.* 2023;9:1037-43. DOI PubMed
  61. Ferriero M, Bove AM, Tuderti G, et al. Impact of learning curve on perioperative outcomes of off-clamp minimally invasive partial nephrectomy: propensity score matched comparison of outcomes between training versus expert series. *Minerva Urol Nephrol.* 2021;73:564-71. DOI PubMed
  62. Flammia RS, Anceschi U, Tuderti G, et al. Development and internal validation of a nomogram predicting 3-year chronic kidney disease upstaging following robot-assisted partial nephrectomy. *Int Urol Nephrol.* 2024;56:913-21. DOI PubMed
  63. Bradshaw AW, Autorino R, Simone G, et al. Robotic partial nephrectomy vs minimally invasive radical nephrectomy for clinical T2a renal mass: a propensity score-matched comparison from the ROSULA (Robotic Surgery for Large Renal Mass) collaborative group. *BJU Int.* 2020;126:114-23. DOI PubMed
  64. Kopp RP, Mehrazin R, Palazzi KL, et al. Survival outcomes after radical and partial nephrectomy for clinical T2 renal tumours categorised by R.E.N.A.L. nephrometry score. *BJU Int.* 2014;114:708-18. DOI PubMed
  65. Veccia A, Falagario U, Martini A, et al. Upstaging to pT3a in patients undergoing partial or radical nephrectomy for cT1 renal tumors: a systematic review and meta-analysis of outcomes and predictive factors. *Eur Urol Focus.* 2021;7:574-81. DOI PubMed
  66. Kara Ö, Maurice MJ, Mouracade P, et al. When partial nephrectomy is unsuccessful: understanding the reasons for conversion from robotic partial to radical nephrectomy at a tertiary referral center. *J Urol.* 2017;198:30-5. DOI PubMed
  67. van der Mijn JC, Al Hussein Al Awamlh B, Islam Khan A, et al. Validation of risk factors for recurrence of renal cell carcinoma: results from a large single-institution series. *PLoS One.* 2019;14:e0226285. DOI PubMed PMC
  68. Capitanio U, Terrone C, Antonelli A, et al. Nephron-sparing techniques independently decrease the risk of cardiovascular events relative to radical nephrectomy in patients with a T1a-T1b renal mass and normal preoperative renal function. *Eur Urol.* 2015;67:683-9. DOI PubMed
  69. Weight CJ, Lieser G, Larson BT, et al. Partial nephrectomy is associated with improved overall survival compared to radical nephrectomy in patients with unanticipated benign renal tumours. *Eur Urol.* 2010;58:293-8. DOI PubMed
  70. Kutikov A, Smaldone MC, Egleston BL, et al. Anatomic features of enhancing renal masses predict malignant and high-grade pathology: a preoperative nomogram using the RENAL Nephrometry score. *Eur Urol.* 2011;60:241-8. DOI PubMed PMC
  71. Van Poppel H, Da Pozzo L, Albrecht W, et al. A prospective, randomised EORTC intergroup phase 3 study comparing the oncologic outcome of elective nephron-sparing surgery and radical nephrectomy for low-stage renal cell carcinoma. *Eur Urol.* 2011;59:543-52. DOI PubMed
  72. Stroup SP, Palazzi K, Kopp RP, et al. RENAL nephrometry score is associated with operative approach for partial nephrectomy and urine leak. *Urology.* 2012;80:151-6. DOI PubMed
  73. Bier S, Aufderklamm S, Todenhöfer T, et al. Prediction of postoperative risks in laparoscopic partial nephrectomy using RENAL, mayo adhesive probability and renal pelvic score. *Anticancer Res.* 2017;37:1369-73. DOI PubMed
  74. Wheat JC, Roberts WW, Hollenbeck BK, Wolf JS Jr, Weizer AZ. Complications of laparoscopic partial nephrectomy. *Urol Oncol.* 2013;31:57-62. DOI PubMed
  75. Liu ZW, Olweny EO, Yin G, et al. Prediction of perioperative outcomes following minimally invasive partial nephrectomy: role of the R.E.N.A.L nephrometry score. *World J Urol.* 2013;31:1183-9. DOI PubMed
  76. Reddy UD, Pillai R, Parker RA, et al. Prediction of complications after partial nephrectomy by RENAL nephrometry score. *Ann R Coll Surg Engl.* 2014;96:475-9. DOI PubMed PMC

77. Tanagho YS, Kaouk JH, Allaf ME, et al. Perioperative complications of robot-assisted partial nephrectomy: analysis of 886 patients at 5 United States centers. *Urology.* 2013;81:573-9. [DOI](#) [PubMed](#)
78. Potretzke AM, Knight BA, Zargar H, et al. Urinary fistula after robot-assisted partial nephrectomy: a multicentre analysis of 1791 patients. *BJU Int.* 2016;117:131-7. [DOI](#) [PubMed](#)
79. Malkoc E, Ramirez D, Kara O, et al. Robotic and open partial nephrectomy for localized renal tumors larger than 7 cm: a single-center experience. *World J Urol.* 2017;35:781-7. [DOI](#) [PubMed](#)
80. Khene ZE, Mazouin C, Larcher A, et al. Predicting complications after robotic partial nephrectomy: back to simplicity. *Eur Urol Focus.* 2022;8:777-83. [DOI](#) [PubMed](#)
81. Yim K, Aron M, Rha KH, et al. Outcomes of robot-assisted partial nephrectomy for clinical T3a renal masses: a multicenter analysis. *Eur Urol Focus.* 2021;7:1107-14. [DOI](#) [PubMed](#)
82. Anceschi U, Brassetti A, Tuderti G, et al. Risk factors for progression of chronic kidney disease after robotic partial nephrectomy in elderly patients: results from a multi-institutional collaborative series. *Minerva Urol Nephrol.* 2022;74:452-60. [DOI](#) [PubMed](#)
83. Borghesi M, Schiavina R, Gan M, Novara G, Mottrie A, Ficarra V. Expanding utilization of robotic partial nephrectomy for clinical T1b and complex T1a renal masses. *World J Urol.* 2013;31:499-504. [DOI](#) [PubMed](#)
84. Basatac C, Akpınar H. 'Trifecta' outcomes of robot-assisted partial nephrectomy: results of the 'low volume' surgeon. *Int Braz J Urol.* 2020;46:943-9. [DOI](#) [PubMed](#) [PMC](#)
85. Lasorsa F, Bignante G, Orsini A, et al. Partial nephrectomy in elderly patients: a systematic review and analysis of comparative outcomes. *Eur J Surg Oncol.* 2024;50:108578. [DOI](#) [PubMed](#)
86. Iossa V, Pandolfo SD, Buonopane R, et al. Robot-assisted partial nephrectomy vs. percutaneous cryoablation for T1a renal tumors: a single-center retrospective analysis of outcomes and costs. *Int Urol Nephrol.* 2024;Online ahead of print. [DOI](#) [PubMed](#)
87. Campi R, Grosso AA, Lane BR, et al; SIB International Consortium. Impact of Trifecta definition on rates and predictors of "successful" robotic partial nephrectomy for localized renal masses: results from the surface-intermediate-base margin score international consortium. *Minerva Urol Nephrol.* 2022;74:186-93. [DOI](#) [PubMed](#)