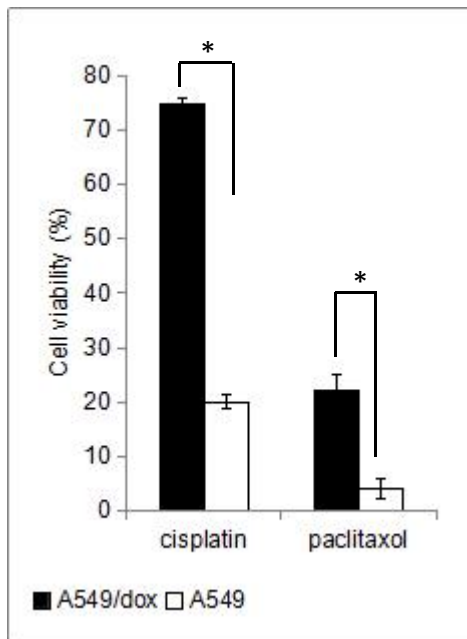
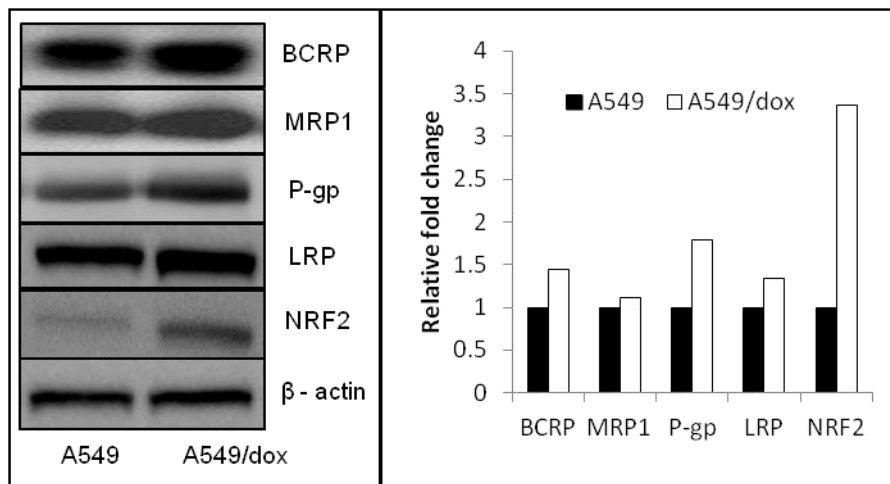


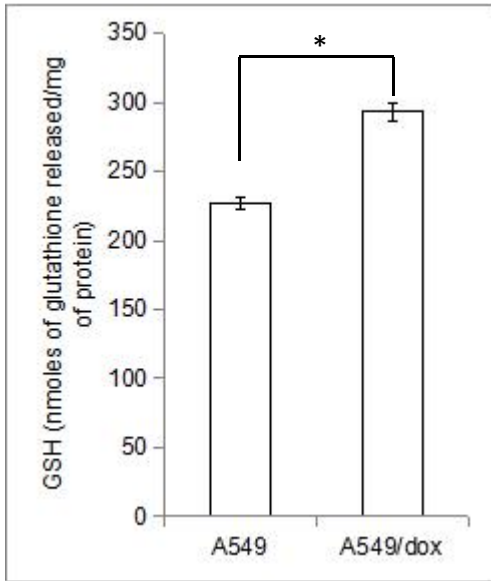
Supplementary Figure 1



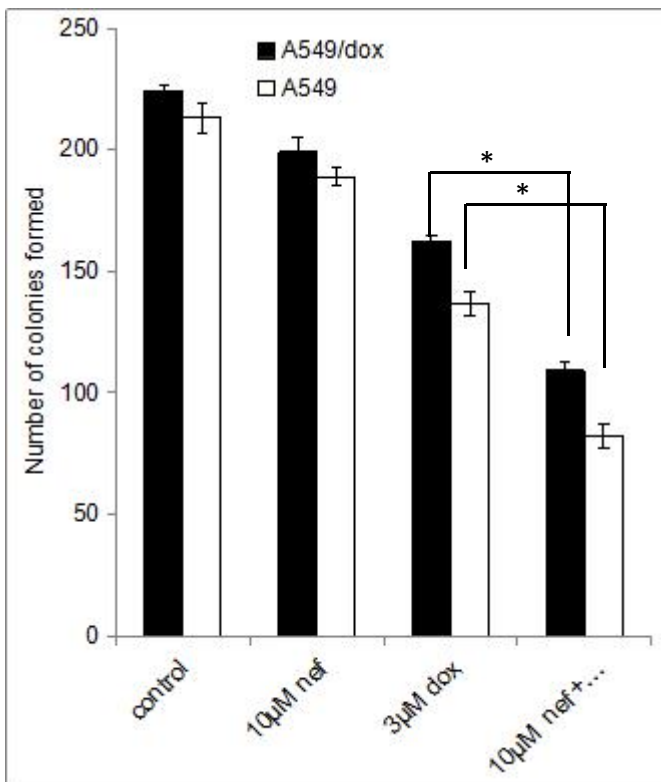
A: A549 dox cells showed cross resistance to paclitaxel and cisplatin. Results shown are mean \pm SEM, which are three separate experiments performed in triplicate. Significance is shown at $P < 0.01$ (One way ANOVA followed by Tukey's multiple comparison test).



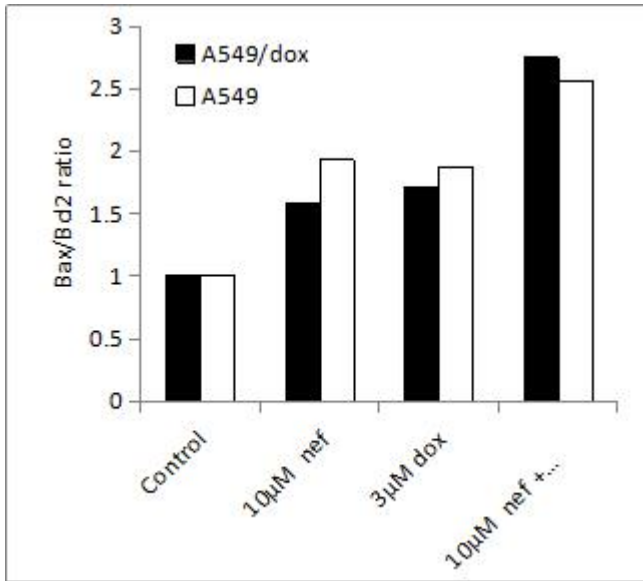
B: the levels of BCRP, MRP1, P-gp, LRP and NRF2 in A549 and A549/dox cells. A549 and A549 cells were analysed for BCRP, MRP1, P-gp, LRP and NRF2 expression, representative western blot images and densitometric analysis are shown.



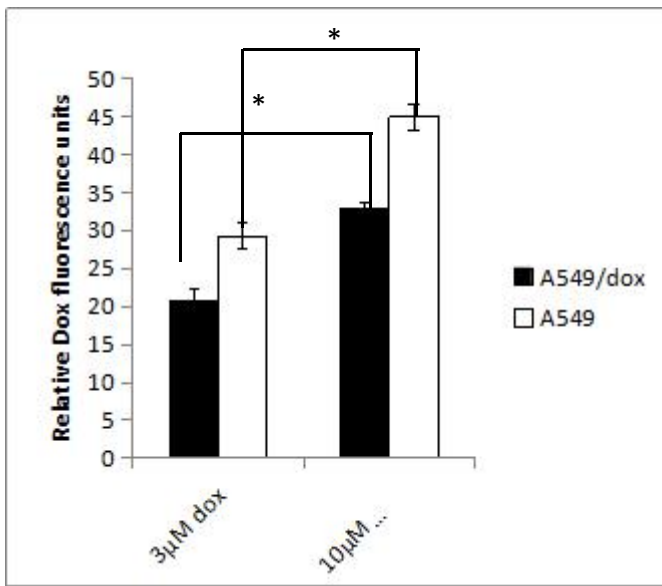
C: the intracellular GSH levels in A549 and A549/dox cells. Results shown are mean \pm SEM, which are three separate experiments performed in triplicate. Significance is shown at $P < 0.01$ (One way ANOVA followed by Tukey's multiple comparison test).



D: number colonies formed by A549 and A549/dox cells. Results shown are mean \pm SEM, which are three separate experiments performed in triplicate. Significance is shown at $P < 0.01$ (One way ANOVA followed by Tukey's multiple comparison test).



E: Bax/Bcl2 ratio in A549 and A549/dox cells



E: intracellular DOX accumulation was potentiated by neferine. Bar chart shows the intensity of the Dox fluorescence quantified using Image J. Results shown are mean \pm SEM, of three separate measurements performed. Significance is shown at $P < 0.01$ (One way ANOVA followed by Tukey's multiple comparison test).